

Georgia Environmental Protection Division
Lower Flint-Ochlockonee Council
Existing Regulatory and Local Plan Summary

I. INTRODUCTION

The Georgia Comprehensive State-wide Water Management Plan, as approved by the Water Council on January 8, 2008, is the guiding document for the development of Regional Water Plans. The Lower Flint-Ochlockonee Water Planning Council (the Council) was designated to oversee the development of the Regional Water Plan for the Lower Flint-Ochlockonee Water Planning Region. A recommended plan is to be submitted by the Council to the Director of the Georgia Environmental Protection Division (EPD) by May 2, 2011. The regional water planning process uses an integrated water management approach, which includes water resource assessments, estimates of current and future water needs for supply and assimilative capacities, and identification and selection of management practices. It also builds upon the knowledge base of previous planning efforts by state and local governments and authorities throughout the planning region.

This memorandum summarizes existing water resources related regulations and reviews existing plans and practices, which were used to assist in the development of the Regional Water Plan by the Lower Flint-Ochlockonee Council. In particular, the Council conducted a comprehensive review of existing local and regional water management plans and relevant related documents to frame the selection of management practices. When possible, successful management practices already planned for and/or in use in the Region formed the basis for the water management practices selected by the Council. The information reviewed and summarized in this memorandum includes the following:

- Georgia Water Quality Control Act
- Watershed Assessments and Watershed Protection Plans
- *Water Quality in Georgia 2006- 2007* (305(b)/303(d) Report)
- TMDL Implementations Plans
- Nonpoint Source Implementation Plans
- Local Comprehensive Plans
- Water and sewer master plans
- Stormwater master plans
- Plans directly submitted for consideration by Council members
- Review of Local Comprehensive Plans and Water Resources Best Management Practices provided by the Southwest Georgia Regional Commission

Georgia Environmental Protection Division
Lower Flint-Ochlockonee Council
Existing Regulatory and Local Plan Summary

A. Regulatory Background

This section summarizes guiding federal and state regulations that affect water supply, water quality, and human health and safety. The Federal Water Pollution Control Act of 1972, as amended by the Clean Water Act of 1977 and the Federal Safe Drinking Water Act (SDWA) of 1986, are the primary federal regulatory drivers for protecting and improving water quality. Administration and enforcement of these Acts are delegated in Georgia to the EPD by the Environmental Protection Agency (EPA). Provisions of the Clean Water Act are established in the state primarily by the Water Quality Control Act, Chapter 391-3-6 of the Georgia Rules and Regulations. These rules provide guidance on and regulate water use classifications, water quality standards, surface water intakes, wastewater treatment and discharges, stormwater permitting, land disposal, underground injection control, water quality monitoring requirements, the State Revolving Fund (SRF), and state-wide water management planning.

The National Pollutant Discharge Elimination System (NPDES) permit program was established under the Clean Water Act to control water pollution by regulating the discharge of pollutants into waters of the United States from point sources. The NPDES program covers several pollutant sources that are regulated by permits issued by the EPD. In impaired waterbodies, these permits are to be based on established Total Maximum Daily Loads (TMDLs), which specify the maximum amount of pollutant that a waterbody can safely assimilate and still meet prescribed water quality standards.

Chapter 391-3-5 of the Georgia rules includes provisions as promulgated by the Georgia Safe Drinking Water Act of 1977 (OCGA 12-5-170), the Georgia Water Supply Act (OCGA 12-5-470), and the Georgia Water Well Standards Act (OCGA 12-5-120). Additional legislation affecting water quality and water resources throughout the state includes the Georgia Erosion & Sedimentation Control Act, the Georgia Safe Dams Act, and the Georgia Endangered Wildlife Act.

Statewide watershed protection programs which implement these regulations are illustrated in Figure I-1.

Georgia Environmental Protection Division
 Lower Flint-Ochlockonee Council
Existing Regulatory and Local Plan Summary

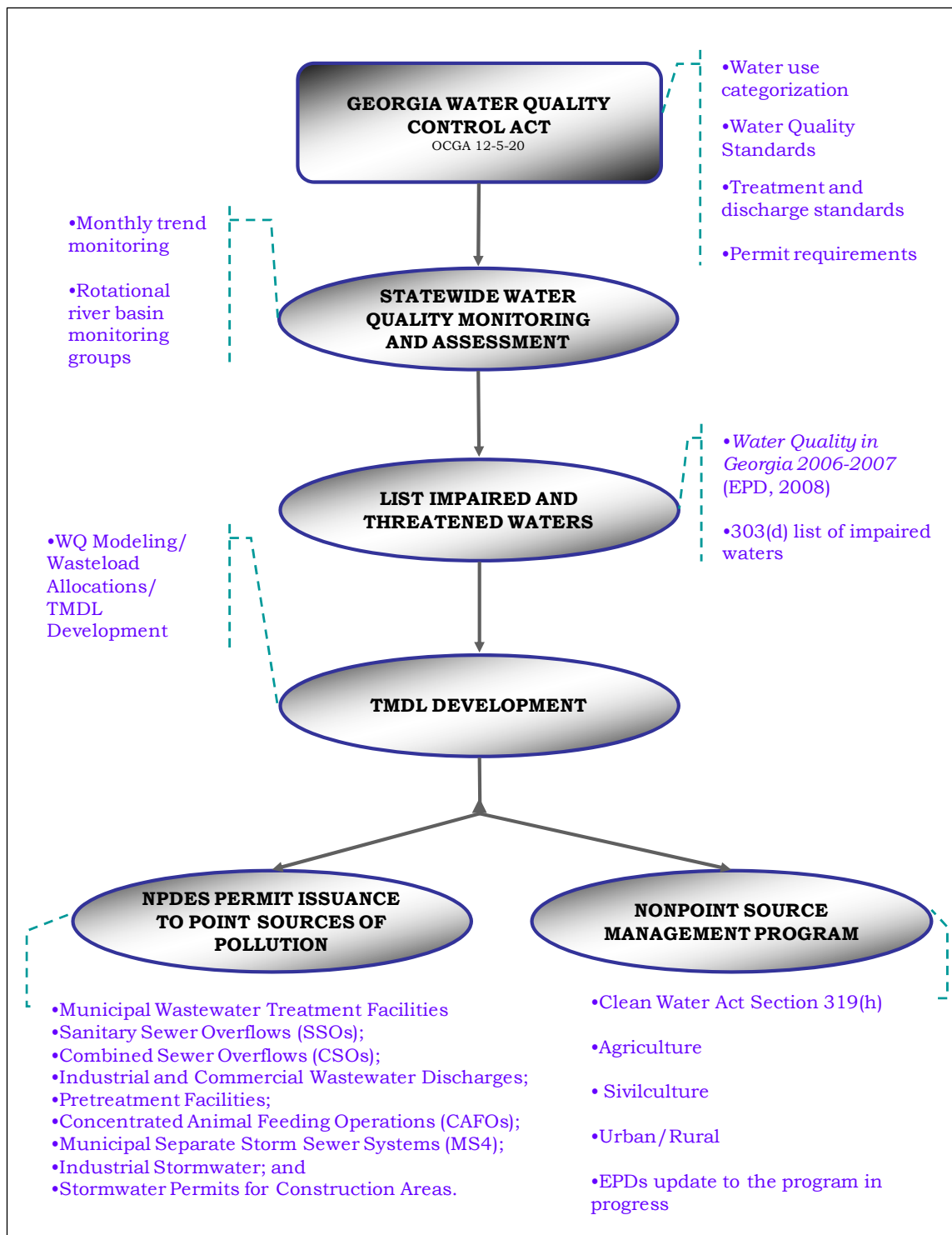


Figure I-1. Statewide Watershed Protection Program

Georgia Environmental Protection Division
 Lower Flint-Ochlockonee Council
Existing Regulatory and Local Plan Summary

B. Watershed Assessments and Watershed Protection Plans

EPD requires watershed monitoring plans, watershed assessments, and watershed protection plans from all publicly owned treatment works greater than 1 MGD or for new or expanding facilities as a part of the National Pollutant Discharge Elimination System. Those activities initiate monitoring, assessment and ultimately the establishment of Best Management Practices (BMPs) employed to enhance water quality from point and non-point sources of pollution. The three elements are outlined in Figure I-2.

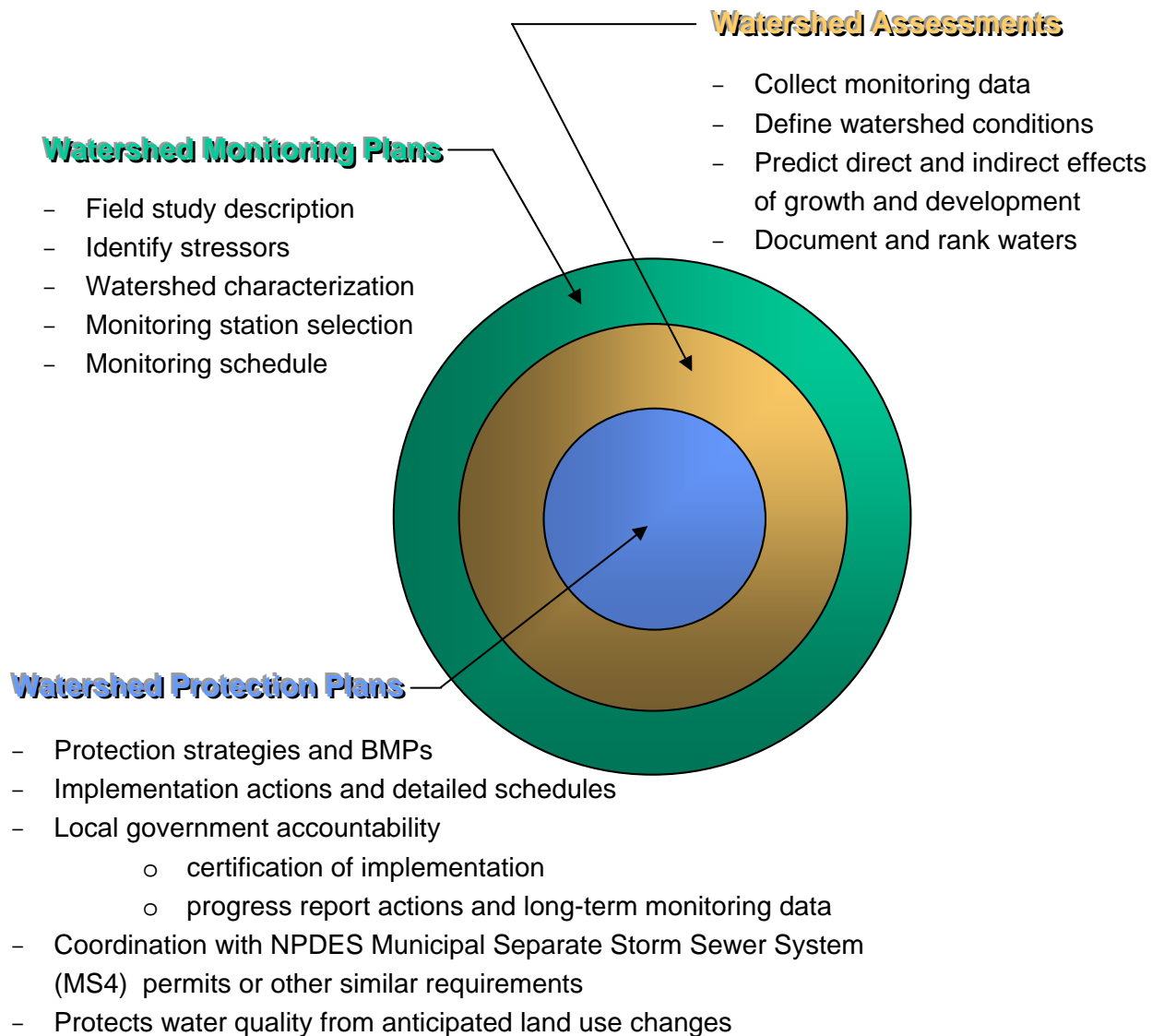


Figure I-2. Watershed Monitoring, Assessments, and Protection Plans

Georgia Environmental Protection Division
Lower Flint-Ochlockonee Council
Existing Regulatory and Local Plan Summary

C. Water Quality in Georgia 2006-2007 (305(b)/303(d) Report)

The state of Georgia assesses its water bodies for compliance with water quality standards criteria established for their designated uses as required by the Federal Clean Water Act (CWA). Waters of the state are monitored by EPD, USGS, and other local authorities contracted by EPD. Permanent monthly trend monitoring sites and an annual rotational river basin monitoring system are in place throughout the state to gather water quality data. Assessed water bodies are placed into two categories, supporting or not supporting their designated uses, depending on water quality assessment results. These water bodies are found on Georgia's 305(b)/303(d) list, as required by those sections of the Clean Water Act and are published in *Water Quality in Georgia 2006-2007* (EPD 2008).

Some of the not supporting water bodies are assigned to Georgia's 303(d) list, if "data indicates that at least one designated use is not being met and TMDL(s) need to be completed for one or more pollutants". Water bodies on the 303(d) list are required to have a Total Maximum Daily Load (TMDL) evaluation for the water quality constituent(s) in violation of the water quality standard. The TMDL represents the sum of allowable loads of a single pollutant from all contributing sources (including nonpoint sources) and includes a margin of safety and seasonal variations in water quality. The TMDL process provides for water quality-based controls to be developed to reduce pollution and restore and maintain water quality.

Water Quality in Georgia 2006-2007 also includes information and background on Comprehensive State-wide Water Management Planning, wetlands programs, estuary and coastal programs, public health and aquatic life issues, water protection programs, groundwater and surface water supplies, and major issues and challenges affecting water resources.

D. TMDL Implementation Plans

All assessed waters whose data indicate that at least one designated use is not being met and that TMDL(s) need to be completed for one or more pollutants are required to have TMDL Implementation Plans developed. These plans are used as a platform to facilitate corrective management strategies. These strategies vary depending on the pollutant of concern and severity of the problem. For point sources, NPDES issuance or re-issuance is performed by EPD in coordination with local governments and industries. For nonpoint sources of pollution TMDL

Georgia Environmental Protection Division
 Lower Flint-Ochlockonee Council
Existing Regulatory and Local Plan Summary

Implementation Plans are conducted through the development of Tier 3 and Tier 2 plans. These tiers are summarized in Table I-1.

Table I-1. TMDL Implementation Plan Development for Nonpoint Sources	
Tier 3	Tier 2
Developed by EPD	Developed by Regional Development Centers (RDCs) and other public contractors
Applicability:	Applicability:
Waters “partially impaired” due to fecal coliform	Instituting and/or continuing local water quality protection and restoration programs
Waters “impaired” due to natural conditions	
Waters with fish consumption advisories	Public outreach coordination
Waters with legacy sediment	
Waters where TMDL models estimate a zero percent load reduction is necessary to achieve standards	Local stakeholder collaboration, planning, and implementation

TMDL Implementation Plans include background information on monitoring activities, information on the pollutant of concern, potential sources of contamination, land use, implementation actions, monitoring plans, and planned outreach activities. Implementation actions may include wasteload allocation changes to existing NPDES permit holders or setting new NPDES permits to unpermitted sites or facilities.

E. Nonpoint Source Management Plans and Programs

The Nonpoint Source Management Program administered by the EPD provides regulatory and non-regulatory approaches to nonpoint source pollution abatement. Implementation of the program is achieved through collaboration with state and federal agencies, local and regional governments, state colleges and universities, businesses and industries, non-governmental organizations, and individual citizens.

Program specific approaches for agriculture, silviculture, and rural/urban nonpoint source pollution are implemented by different state agency leads other than EPD. The agencies and their programs are summarized in Table I-2.

Georgia Environmental Protection Division
 Lower Flint-Ochlockonee Council
Existing Regulatory and Local Plan Summary

Table I-2. Nonpoint Source Management Program		
Sector	Lead Agency	Program Highlights
Agriculture	Georgia Soil and Water Conservation Commission (GWSCC)	<ul style="list-style-type: none"> • Non-regulatory • Voluntarily installed BMPs • Erosion and sediment control • Streambank restoration • Interagency support includes technical resources and financial resources for priority watersheds • Additional funding and assistance from Federal Farm Bill and NRCS programs
Silviculture	Georgia Forestry Commission (GFC)	<ul style="list-style-type: none"> • Non-regulatory • Voluntarily installed BMPs • Erosion and sediment control • Streambank restoration • Wetlands delineation • Community assistance program • Biennial Statewide BMP Compliance Survey conducted
Urban/Rural	Department of Community Affairs (DCA)	<ul style="list-style-type: none"> • Multiple targets for management practice implementation from site specific, system-wide, river corridors, and watersheds • Comprehensive watershed management • Water Resources Toolkit • Urban nonpoint management driven in part by TMDLs • <i>Georgia Stormwater Management Manual – Volume 1</i> and <i>Georgia Stormwater Policy Guide – Volume 2</i> (ARC, EPD 2001) • Georgia Project WET and Georgia Adopt-A-Stream Program

Georgia Environmental Protection Division
Lower Flint-Ochlockonee Council
Existing Regulatory and Local Plan Summary

A major financial driver behind implementation of the nonpoint source programs are federal monies allocated to the states under Section 319(h) of the Clean Water Act. With these funds, grants can be awarded by EPD directly to local governments or to the GWSCC, GFC, Regional Development Council's (RDCs), Resource Conservation and Development Councils (RC&Ds), and Universities who award and oversee 319(h) grants within their respective areas. Grantees are responsible for analysis of nonpoint source pollution problems within their jurisdictions and the design of an implementation plan employing innovative methods and practices to protect and improve water quality. Grant awardees are responsible for full implementation of the program and a 40 percent cost share with the state. Follow-up monitoring and load reduction reporting are submitted to the state upon project completion to gauge effectiveness.

F. Local Comprehensive Plans

The Georgia Department of Community Affairs (DCA) administers the rules promulgated by the Georgia Planning Act of 1989, which require all counties and cities within the state to develop comprehensive plans. The plans must provide 20 year forecasts of expected activities. The "Minimum Planning Standards" per Chapter 391-3-16 of the Georgia Rules and Regulations, require those plans to establish protection measures for the water resources within the given jurisdictional boundary. The rules specifically provide guidance for water supply watersheds, groundwater recharge areas, wetlands protection, river corridor protection, and mountain protection.

City and county roles and responsibilities for water supply and wastewater services are established via the Service Delivery Strategy Act and must be coordinated with the comprehensive plans. Service Delivery Strategies are defined as the "intergovernmental arrangement among city governments, the county government, and other affected entities within the same county for delivery of community services..." per Chapter 110-12-1 of the DCA rules. Water related services are provided by the city, county, or both per negotiated agreements under the Act.

It is noted that water and sewer master plans are not necessary per the rules and regulations as a stand-alone document. In many cases however, the development of such master plans are required as part of a discharge permit condition. This is particularly the case in large urban areas.

Georgia Environmental Protection Division
Lower Flint-Ochlockonee Council
Existing Regulatory and Local Plan Summary

G. Stormwater Management Plans

Similar to water and sewer master planning, stormwater management planning should be included within local comprehensive planning efforts. The local provider(s) of stormwater system services should be identified per the Service Delivery Strategy Act within individual counties.

Municipal separate storm sewer systems (MS4) that discharge into surface waters are required to have a permit under the Clean Water Act. The U.S. Environmental Protection Agency (EPA) NPDES stormwater regulations have established two phases (Phase I and Phase II) for the municipal stormwater permit program. Phase I communities have individual permits and discharge limitations, and Phase II communities are covered under a general permit requiring implementation of BMPs in lieu of monitoring. MS4 permit holders are required to submit annual Stormwater Management Plans (SWMP) to the EPD.

In addition to municipalities, the Phase I federal regulations include general permit conditions for 11 industrial subcategories. EPD issued a corresponding NPDES General Permit No. GAR000000 that regulates stormwater discharge for 10 industrial categories.

Georgia Environmental Protection Division
 Lower Flint-Ochlockonee Council
Existing Regulatory and Local Plan Summary

II. Findings

A. Watershed Assessments and Watershed Protection Plans

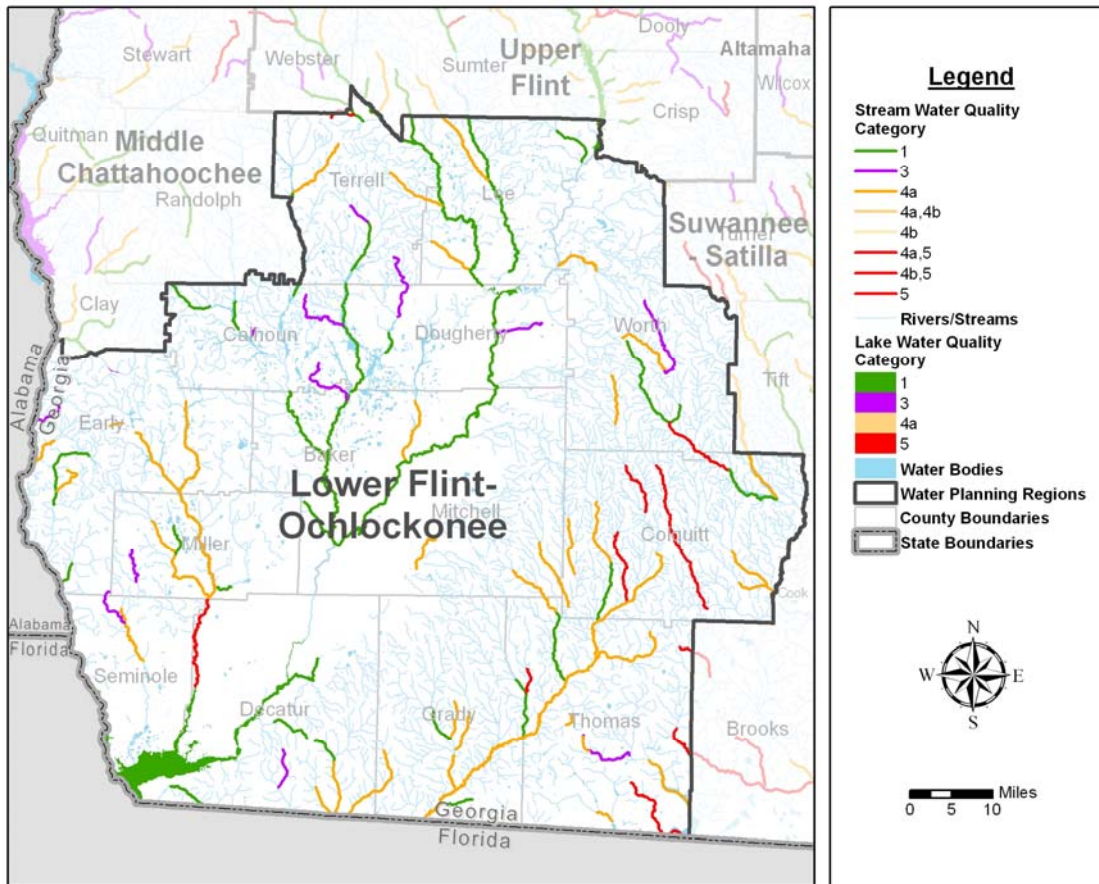
Several cities and counties within the planning region have recently completed or are in the process of developing a Watershed Monitoring Plan (WMP), Watershed Assessment (WA), and Watershed Protection Plan (WPP). A summary of ongoing assessments as provided by EPD is presented in Table II-1.

Table II-1. Ongoing Watershed Assessments and Protection Plans					
City -or- County	NPDES Permit No.	Basin	WMP	WA	WPP
City of Albany	GA0037222	Flint	x		
City of Arlington	GA0026204	Flint	x	x	x
City of Bainbridge	GAU050140	Flint	x		
City of Blakely	GA0025585		x	x	
City of Camilla	GA0200088	Flint			
City of Dawson	GA0021326	Flint			
Decatur County		Flint/ Ochlockonee	x	x	
City of Donalsonville	GA0026133	Flint			
Lee County	GA0026603	Flint	x	x	x
City of Leesburg	GA0026638	Flint	x	x	
City of Thomasville	GA0024082	Ocklockonee			

B. Water Quality in Georgia 2006-2007 (305(b)/303(d) Report)

The 305(b)/303(d) list includes assessed waters by major watershed and assigns a categorical value based on whether or not the water is meeting water quality standards to support its designated use classification. A summary of the 305(b)/303(d) list is provided in Figure II-1. The 305(b)/303(d) list for stream segments and lakes within the Lower Flint-Ochlockonee Water Planning Region is an Attachment to this technical memorandum (see Tables A-1 and A-2).

Georgia Environmental Protection Division
 Lower Flint-Ochlockonee Council
Existing Regulatory and Local Plan Summary



Category Definitions:

- 1 – Waters meeting designated use(s).
- 2 – Waters having more than 1 designated use and data indicate at least one is being met, but there is insufficient evidence to determine that all uses are being met.
- 3 – Insufficient data or other information to make a determination as to whether or not the designated use(s) is being met
- 4a – Data indicate that at least one designated use is not being met, but TMDL(s) have been completed for the parameter(s) that are causing impairment
- 4b – Data indicate that at least one designated use is not being met, but there are actions in place (other than a TMDL) that are predicted to lead to compliance with water quality standards.
- 4c – Data indicate that one designated use is not being met, but the impairment is not caused by a pollutant.
- 5 – Data indicates that at least one designated use is not being met and TMDL(s) need to be completed for one or more pollutants.

River Basin	Total River Miles Impaired in the Middle Chattahoochee Region				Total
Chattahoochee	0	0	0	10	10
Flint	45	58	15	67	136
Ochlockonee	35	124	63	16	200
Suwannee	49	40	0	12	81
Criterion Violated	DO	Fecal Coliforms	Metal	Other	Regional Total = 427 miles

Note: Stream reaches may have more than one criterion violated, i.e. the sum of DO, Fecal Coliforms, Metals, and Other may be greater than the total number of stream miles listed as impaired. Metals includes mercury trophic-weighted residue value and fish consumptive guidance.

Figure II-1. 305(b)/303(d) Summary for Lower Flint-Ochlockonee Region

Georgia Environmental Protection Division
Lower Flint-Ochlockonee Council
Existing Regulatory and Local Plan Summary

C. TMDL Implementation Plans

TMDL implementation plans for stream reaches and lakes within the Lower Flint-Ochlockonee Region are summarized in Table A-1. The pollutant criterion violated and potential cause codes as defined by EPD are provided in the table along with the year which the plan was adopted. These listed waters correspond to assessment category 4a stream reaches as is defined in Figure II-1. EPD continues to monitor and assess these impaired waters per their respective plans. Future permitting within watersheds having impaired waters will continue to be reassessed as additional information becomes available. All TMDL Implementation Plans are available through the following EPD website: http://www.gaepd.org/Documents/TMDL_page.html.

D. Nonpoint Source Management Plans and Programs

Best management practice programs and oversight are in place regarding water quality protection in the region and the state by the Georgia Forestry Commission (GFC) in cooperation with EPD. The GFC investigates water quality complaints and works with landowners, timber buyers, and loggers to correct any problems. In cases where the GFC cannot get satisfactory compliance, the case is turned over to EPD for enforcement. In addition the GFC conducts a biennial statewide Best management Practice (BMP) compliance survey. The GFC conducts field surveys and documents compliance with implementation of BMPs. In 2009, the GFC completed a standardized survey at 221 sites totaling 27,000 acres. The number of acres with BMP compliances was 99.7%. This effort provides the forestry industry with documentation of BMP compliance.

Several active Section 319(h) projects fall within the region or are statewide initiatives. These projects are summarized in Table II-2. On August 16, 2010, EPD issued a memorandum to the regional councils to inform them that recommended nonpoint source pollution management projects identified in the regional water plans could be considered for 319(h) funding. The Lower Flint-Ochlockonee Council issued a letter of support to Georgia EPD on February 21, 2011 regarding a Section 319(h) grant proposal from the Golden Triangle Resource Conservation & Development Council (RC&D) to implement nonpoint source control on dirt roads in the Spring Creek watershed. This letter is appended to this technical memorandum. The Lower Flint-Ochlockonee Council intends to continue coordinating with EPD and Golden Triangle RC&D to support implementation of this 319(h) project in the Lower Flint-Ochlockonee Region as part of the implementation of the Council's Regional Water Plan.

Georgia Environmental Protection Division
 Lower Flint-Ochlockonee Council
Existing Regulatory and Local Plan Summary

Table II-2. Nonpoint Source Management Plans/Programs		
Plan/Program Name	Lead Agency	Description
Silvicultural Nonpoint Source Management Program	Georgia Forestry Commission	Statewide effort to assess the use of BMPs within the Forestry community
Georgia Stormwater Management Manual - Volume 3	Atlanta Regional Commission	Volume 3 will identify "good housekeeping" measures to control and reduce nonpoint source pollution from stormwater. These measures will be for use Statewide
Upper Ocklockonee River Basin TMDL Implementation Project	GSWCC	Coordination with local landowners; Nutrient management plan development; Installation of BMPs; Includes portions of Colquitt, Grady, Mitchell, Thomas, and Worth counties; Implementing Agricultural Components of TMDL Implementation Plans for the Upper Ochlockonee River Basin
Spring Creek Watershed Management	Golden Triangle RC&D Council	Funding of the Spring Creek Watershed Partnership, comprised of local citizens and landowners, local, state and federal governments, and non-profit organizations to prevent nonpoint source pollution, assist in promoting BMP implementation practices and distribute Section 319(h) funding
Continued Implementation of the Spring Creek Watershed Management Plan (Phase II)	Golden Triangle RC&D Council	Project will continue ongoing efforts to protect and restore Spring Creek
Operation Clean Aquifers	Golden Triangle RC&D Council	Project focused on protecting ground and surface water from agriculture related nonpoint source pollution
Demonstrating the Benefits of Portable Timber Bridges for Forest Road Stream Crossings	Pine Country RC&D Council	BMP demonstration project / forestry
Better Back Roads	Two Rivers	Project is using practices from the Better Back

Georgia Environmental Protection Division
 Lower Flint-Ochlockonee Council
Existing Regulatory and Local Plan Summary

Table II-2. Nonpoint Source Management Plans/Programs		
Plan/Program Name	Lead Agency	Description
Sediment Reduction Project	RC&D Council	Roads Manual to address unpaved roads as sources of sediment
Georgia Better Back Roads Manual	Pine Country RC&D Council	Nonpoint source tool development

E. Local Comprehensive Plans

The Georgia Department of Community Affairs maintains all local comprehensive plans determined to be compliant with the Local Planning Requirements. Approved plans falling with the Lower Flint-Ochlockonee Region and reviewed by the Lower Flint-Ochlockonee Council for consistency with the Lower Flint-Ochlockonee Regional Water Plan are summarized in Table II-3.

Table II-1. Local Government Master/Management Plan Survey			
County	City/Towns	Comprehensive Plan	Community Assessment
Baker	-		x
	Newton		
Calhoun	-	x	
	Arlington		
	Edison		
	Morgan		
	Leary		
	-		
Colquitt	Doerun		
	Funston		
	Riverside		
	Moultrie		
	Norman Park		
	Ellenton		
	Berlin		
Decatur	-		x

Georgia Environmental Protection Division
 Lower Flint-Ochlockonee Council
Existing Regulatory and Local Plan Summary

Table II-1. Local Government Master/Management Plan Survey			
County	City/Towns	Comprehensive Plan	Community Assessment
	Brinson		
	Bainbridge	x	
	Climax		
	Attapulgus		
Dougherty	-	x	
	Albany		
Early	-	x	
	Blakely		
	Damascus		
	Jakin		
Grady	-		x
	Cairo		
	Whigham		
Lee	-	x	
	Smithville		
	Leesburg		
Miller	-		x
	Colquitt		
Mitchell	-	x	
	Baconton		
	Camilla		
	Sale City		
	Pelham		
Seminole	-		x
	Donalsonville		
	Iron City		
Terrell	-	x	
	Dawson	x	
	Sasser		

Georgia Environmental Protection Division
 Lower Flint-Ochlockonee Council
Existing Regulatory and Local Plan Summary

Table II-1. Local Government Master/Management Plan Survey			
County	City/Towns	Comprehensive Plan	Community Assessment
	Bronwood		
	Parrott		
Thomas	-		x
	Thomasville		
	Ochlocknee		
	Coolidge		
	Boston		
Worth	-		x
	Warwick		
	Sylvester		
	Poulan		
	Sumner		

Additional plans and reports provided to the Council were also reviewed and where applicable used to frame the selection of management practices. When possible, successful management practices already planned for and/or in use in the Region formed the basis for the water management practices selected by the Council. These plans were also used to refine water and wastewater forecasting when necessary. A summary of planning reports and documents submitted directly by Council members for consideration is provided in Table II-4.

Table II-4. Additional Plans Considered When Selecting Management Practices	
<i>Plan Type or Specific Title</i>	Flint River Basin Regional Water Development and Conservation Plan
<i>Regional Resource(s) Impacted (Watershed/Aquifer)</i>	Watersheds within Subarea 4 of the Flint River Basin (Spring Creek, Ichawaynochaway Creek, Lower Flint River), Upper Floridan Aquifer
<i>Organization or Entity Associated With Plan</i>	Georgia EPD
<i>Date of Plan</i>	March 20, 2006

Georgia Environmental Protection Division
 Lower Flint-Ochlockonee Council
Existing Regulatory and Local Plan Summary

Table II-4. Additional Plans Considered When Selecting Management Practices	
<i>Description of Relevant Plan Content (i.e. Practices currently planned for and/or in use in the Region to form the basis for the Council's selected water management practices)</i>	See section III of this technical memorandum
<i>Plan Type or Specific Title</i>	A Comprehensive Wildlife Conservation Strategy for Georgia
<i>Regional Resource(s) Impacted (Watershed/Aquifer)</i>	Multiple regional surface waters
<i>Organization or Entity Associated With Plan</i>	Georgia Department of Natural Resources – Wildlife Resources Division
<i>Date of Plan</i>	August, 31, 2005
<i>Description of Relevant Plan Content (i.e. Practices currently planned for and/or in use in the Region to form the basis for the Council's selected water management practices)</i>	Emphasizes the conservation of “Georgia’s animals, plants, and natural habitats through proactive measures emphasizing voluntary and incentive-based programs on private lands, habitat restoration and management by public agencies and private conservation organizations, rare species survey and recovery efforts, and environmental education and public outreach activities.” A summary of aquatic species which are currently under state or federal protection and a list of high priority waters specific to the Lower Flint-Ochlockonee region identified by the Wildlife Resources Division are appended to this document.

F. Stormwater Management Plans

A survey of existing permitted municipal separate stormwater systems (MS4) within the planning region has been performed. Each local and/or county government or jurisdiction with a MS4 NDES permit is responsible for submitting an annual stormwater management plan to EPD. Permitted MS4 discharges within the planning region are presented in Table III-5.

Georgia Environmental Protection Division
 Lower Flint-Ochlockonee Council
Existing Regulatory and Local Plan Summary

Table II-5. Permitted Municipal Separate Stormwater Systems (MS4) in the Lower Flint-Ochlockonee Region	
Phase I Permits (individual permits and discharge limitations)	Phase II Permits (general permit holders requiring implementation of BMPs in lieu of monitoring)
None	Albany (Dougherty County)
	Leesburg (Lee County)

A survey of existing regulated stormwater discharges within the planning region has also been performed. Each discharger is responsible for submitting an annual stormwater management plan to EPD. Regulated stormwater discharges within the planning region are presented in Table II-6.

Table II-6. Permitted Industrial Stormwater Discharges		
NOI#	INDUSTRY	CITY
Terrell County		
00246	TYSON FOODS, INC.	DAWSON
00059	DAWSON MANUFACTURING COMPANY	DAWSON
10298	GOLDEN PEANUT CO	DAWSON
Lee County		
04190	PUBLIC WORKS AND LANDFILL	LEESBURG
03028	MARTIN MARIETTA AGGREGATES - ALBANY QUARRY	LEESBURG
Worth County		
02210	SYLVESTER R/M PLANT	SYLVESTER
Dougherty		
02200	SOUTHEASTERN FREIGHT LINES, INC.	ALBANY
01650	COATS & CLARK, INC.	ALBANY
02808	PROCTER & GAMBLE PAPER PRODUCTS COMPANY	ALBANY
00485	GEORGIA - PACIFIC CORPORATION	ALBANY
01739	D & D WOOD PRESERVING, INC.	ALBANY
00651	AAA COOPER TRANSPORTATION	ALBANY
02932	MILLER BREWING COMPANY	ALBANY
00966	COOPER TIRE COMPANY	ALBANY
01809	MARINE CORPS LOGISTICS BASE	ALBANY

Georgia Environmental Protection Division
 Lower Flint-Ochlockonee Council
Existing Regulatory and Local Plan Summary

Table II-6. Permitted Industrial Stormwater Discharges		
NOI#	INDUSTRY	CITY
01204	CELLO - FOIL PRODUCTS, INC.	ALBANY
01973	REEVES CONSTRUCTION COMPANY	ALBANY
02445	UNITED PARCEL SERVICE, INC.	ALBANY
01163	MARS SNACKFOODS US, LLC	ALBANY
02518	FLORIDA ROCK & TANK LINES, INC.	ALBANY
02921	FEDERAL EXPRESS ABYA	ALBANY
02848	OXFORD CONSTRUCTION COMPANY - ASPHALT PLANT #1	ALBANY
10572	USF HOLLAND INC (AB)	ALBANY
03062	CONCRETE ENTERPRISES, INC.	ALBANY
03049	SCHUFF STEEL, INC.	ALBANY
10478	MAPLE HILL C&D LANDFILL	ALBANY
10332	TARA FOODS	ALBANY
00596	USF HOLLAND INC.	RINGGOLD
03459	NORFOLK SOUTHERN - ALBANY YARD	ALBANY
10204	CON-WAY FREIGHT	ALBANY
10202	AAA USED AUTO PARTS	ALBANY
10407	ALBANY RECYCLING SERVICES INC	ALBANY
03639	VEOLIA ES SOUTH GEORGIA HAULING	ALBANY
03634	FLEMING GAISSERT ROAD MSW LANDFILL	ALBANY
10249	FLORIDA ROCK - ALBANY READY MIX	ALBANY
Early County		
10336	MAVERICK TUBE	CEDAR SPRINGS
00036	BLAKELY R/M PLANT	BLAKELY
03044	GEORGIA PACIFIC CEDAR SPRINGS LLC	CEDAR SPRINGS
10513	GOLDEN PEANUT, LLC SPECIALTY PRODUCTS PLANT	BLAKELY
10322	TURNAGE TRACTOR PARTS	BLAKELY
03216	HPI GEORGIA INC.	DAMASCUS
00449	GENERAL CHEMICAL CORPORATION	CEDAR SPRINGS

Georgia Environmental Protection Division
 Lower Flint-Ochlockonee Council
Existing Regulatory and Local Plan Summary

Table II-6. Permitted Industrial Stormwater Discharges		
NOI#	INDUSTRY	CITY
Mitchell County		
03949	EQUITY GROUP GEORGIA DIVISION LLC.PROCESSING PLANT	CAMILLA
03896	WIND GAP FARMS	BACONTON
03951	EQUITY GROUP GEORGIA DIVISION LLC - FEED MILL	CAMILLA
03952	EQUITY GROUP GEORGIA DIVISION, LLC - HATCHERY	CAMILLA
02209	CAMILLA R/M PLANT	CAMILLA
03950	EQUITY GROUP GEORGIA DIVISION LLC - TRUCK SHOP	CAMILLA
Colquitt County		
03061	CONCRETE ENTERPRISES, INC.	MOULTRIE
02860	BEADLES LUMBER COMPANY	MOULTRIE
01150	HUBBELL DIE CASTING	MOULTRIE
03801	NATIONAL BEEF PACKING CO.	MOULTRIE
10414	SOWEGA TIRE RECYCLERS	DOERUN
01964	REEVES CONSTRUCTION COMPANY	MOULTRIE
02120	UNIVERSAL FOREST PRODUCTS, INC.	MOULTRIE
10100	COX TRUCK & VAN	MOULTRIE
10207	COX AUTO PARTS	MOULTRIE
10261	SANDERSON FARMS	MOULTRIE
Decatur County		
03613	AMERICAN FIBERS & YARNS CO. - BAINBRIDGE	BAINBRIDGE
04519	DECATUR COUNTY MSWLF	ATTAPULGUS
03622	TEXPAR ENERGY, INC.	BAINBRIDGE
04506	GEORGIA GULF SULFUR	BAINBRIDGE
10295	FLORIDA ROCK & TANK LINES	BAINBRIDGE
01197	ELBERTA CRATE AND BOX COMPANY	BAINBRIDGE
01647	PROPEX	BAINBRIDGE
02850	OXFORD CONSTRUCTION COMPANY - ASPHALT PLANT NO 4	BAINBRIDGE
00037	BAINBRIDGE R/M PLANT	BAINBRIDGE
02775	BASF CATALYSTS - ATTAPULGUS OPERATION	ATTAPULGUS

Georgia Environmental Protection Division
 Lower Flint-Ochlockonee Council
Existing Regulatory and Local Plan Summary

Table II-6. Permitted Industrial Stormwater Discharges		
NOI#	INDUSTRY	CITY
1190	SCHNITZER SE	BAINBRIDGE
3863	OXFORD CONSTRUCTION COMPANY - ASPHALT PLANT NO. 2	BAINBRIDGE
10124	ATTAPULGITE MINING INC	ATTAPULGUS
03252	SHAW INDUSTRIES PLANT # 70 & 86	BAINBRIDGE
10042	CRESCENT LAKE MINE	ATTAPULGUS
Grady County		
04160	THOMASVILLE R/M PLANT (FLORIDA ROCK IND.)	THOMASVILLE
04159	SEMINOLE MARINE	CAIRO
04442	FULGHUM FIBRES / CAIRO DIVISION	CAIRO
00029	TIMKEN CAIRO	CAIRO
10408	GRADY COUNTY MINE	CAIRO
02448	UPS, INC.	CAIRO
00033	CAIRO R/M PLANT	CAIRO
Thomas County		
00257	FLOWERS BAKING COMPANY OF THOMASVILLE, LLC.	THOMASVILLE
02800	WAVERLY MINERALS, INC.	MEIGS
02799	CLEAVER-BROOKS	THOMASVILLE
04447	FEDEX NATIONAL LTL, INC.	THOMASVILLE
03799	GEORGIA PIPE COMPANY	THOMASVILLE
10622	CROWDER SAND MINE	THOMASVILLE
01605	HOOD INDUSTRIES, INC.	THOMASVILLE
03417	CATERPILLAR, INC.	THOMASVILLE
04428	THOMAS COUNTY SAND MINE	OCHLOCKNEE
00412	THOMAS COUNTY - THOMASVILLE SUNSET DR. MSW/C&D LF	THOMASVILLE
01994	GRIFFIN INDUSTRIES, INC.	THOMASVILLE
04437	PACK'S AUTO PARTS & SALVAGE, INC.	THOMASVILLE
00436	OIL - DRI CORPORATION - SMITH MINE #101-96	OCHLOCKNEE
00437	OIL - DRI CORPORATION THOMPSON MINE #788-85	OCHLOCKNEE
00470	BALFOUR LUMBER COMPANY, INC.	THOMASVILLE
00483	TURBINE ENGINE COMPONENTS TECHNOLOGIES	THOMASVILLE
00492	OIL - DRI CORPORATION NORTH & SOUTH PLANTS	OCHLOCKNEE

Georgia Environmental Protection Division
 Lower Flint-Ochlockonee Council
Existing Regulatory and Local Plan Summary

Table II-6. Permitted Industrial Stormwater Discharges		
NOI#	INDUSTRY	CITY
04329	OIL-DRI BARLOW MINE SMLUP 1322-01	OCHLOCKNEE
00120	CAPITAL AUTO PARTS, INC.	THOMASVILLE
04330	OIL-DRI HURST MINE SMLUP 1603-06	OCHLOCKNEE
00949	THOR MINE	OCHLOCKNEE
01047	SIEMENS WATER TECHNOLOGIES CORP	THOMASVILLE

G. Georgia Association of Regional Commissions – Review of Local Comprehensive Plans & Water Resource Best Management Practices

A review of local comprehensive plans and water resources best management practices provided by the Southwest Georgia Regional Commission was also used to assist the Council in framing management practice selection. The regional commissions established throughout the state help develop and promote comprehensive planning to sustainably develop regional economies while meeting the minimum planning standards established in Chapter 391-3-16 of the Georgia Rules and Regulations.

A list of best management practices established in existing local plans provided by the Southwest Georgia Regional Commission is an Attachment to this technical memorandum (see table A-3).

III. Flint River Basin Regional Water Development and Conservation Plan

The adopted Flint River Basin Regional Water Development and Conservation Plan (the Plan) was released on March 20, 2006 by EPD. This document provides the current basis for agricultural water use permit issuance by EPD as authorized by the Water Quality Act (O.C.G.A. 12-5-31(h)) and Groundwater Use Act (O.C.G.A. 12-5-96(e)) with a focus on agricultural use in the lower Flint River Basin. The statutes direct the Plan to:

- Promote conservation and reuse of water;
- Guard against a shortage of water;
- Promote the efficient use of water resources; and

Georgia Environmental Protection Division
Lower Flint-Ochlockonee Council
Existing Regulatory and Local Plan Summary

- Manage the water resources of the Flint River Basin such that they are sustainable and consistent with the public welfare.

Development of the Plan included policy recommendations made by a Stakeholder Advisory Committee (SAC); several, but not all, of these recommendations were incorporated into the final Plan. The SAC consisted of farmers and agribusiness representatives, the Southwest Georgia Water Task Force, Flint River Regional Water Council, local elected officials, municipal authority and/or utility representatives, recreational advocates, the Georgia Conservancy, League of Conservation Voters, and others. The SAC worked with a Technical Advisory Committee (TAC) which consisted of experts well versed in the water resources, geology, and agricultural systems of the Flint River Basin. The SAC partnered with EPD in shaping a plan based upon evaluation of technical data, existing EPD regulatory limits, and ground- and surface water modeling results that would protect existing permitted users and the water resource.

The goal of the Plan was to achieve a balance between the long-term sustainability of the environment and the economic viability of farmers in the region. The Plan provides a scientific and policy foundation for water resources planning in the Flint River Basin and will be implemented in concert with the Regional Water Plans of the Lower Flint-Ochlockonee and Upper Flint Councils.

A. Background

The circumstances leading to the initiation of the Plan in October of 1999 were as follows:

- The worst drought in Georgia since the mid 1950s began in May 1998. Before the drought years of 1998–2002 took their toll, Georgians had experienced relatively infrequent and mild drought conditions from the 1960s through the 1990s. Long-term climate records however, indicate drought durations of two or more years are likely to occur, on average, one in every 25 years (Stooksbury, 2003).

The compounding effects of irrigation and drought are cited in the Plan. These effects include more frequent and prolonged periods when low flow criteria established by the

Georgia Environmental Protection Division
Lower Flint-Ochlockonee Council
Existing Regulatory and Local Plan Summary

U.S. Fish and Wildlife Service (USFWS) are not met for certain segments of the Flint River and its tributaries;

- Two years preceding the drought USGS Open-File Report 95-321 (1996) was published. The report was undertaken to better understand groundwater availability and its relation to surface water in the lower portion of the Apalachicola-Chattahoochee-Flint River Basin, particularly Subarea 4 of the Flint River Basin. Quantitative models were developed to predict current and future groundwater withdrawals and the affects to surface water flow during drought conditions. The USGS model indicated that under extreme drought conditions and increased irrigation the Flint River could cease to flow in some sub-basins.

In other sub-basins, Floridan aquifer withdrawals showed limited to no effect on stream flow conditions during drought conditions. In the Plan, EPD concludes that groundwater withdrawals in some small watersheds are attributed with having the greatest impact on stream flows outside of direct surface water withdrawals. The primary USGS HUC-8 designated watersheds identified as having the greatest impact include portions of the Ichawaynochaway Creek sub-basin, Spring Creek sub-basin, and Lower Flint River sub-basin.

- Agricultural permit applications within the lower Flint Basin began to rise at an accelerated pace in response to concerns of a pending moratorium on permit issuance.

EPD announced the moratorium on issuance of new agricultural water use permits for Floridan aquifer withdrawals in Subarea 4 and for all surface water withdrawals within the Flint River Basin on December 1, 1999. The moratorium lasted through March 17, 2006 after which a backlog of permit applications (1,134 permit applications in total accounting for irrigation of an additional 96,219 acres) began to be reviewed against the criteria set forth in the Plan.

The Georgia General Assembly enacted the Flint River Drought Protection Act (O.C.G.A. 12-5-540) amid the drought years of 1999-2000. The Georgia rules and regulations promulgated by the Act were drafted concurrently with the Plan under Chapter 391-3-28 with the latest revision adopted on June 23, 2006. The rules provide for an incentive based program by which lands

Georgia Environmental Protection Division
Lower Flint-Ochlockonee Council
Existing Regulatory and Local Plan Summary

irrigated from aquifers or streams directly impacting flows of the Flint River be voluntarily discontinued by farmers by means of an irrigation reduction auction during prescribed drought conditions.

The Director of the EPD is responsible for issuing a severe drought declaration on or before March 1st of each year. A severe drought declaration is to be followed by the determination of the extent of acreage on which irrigation should be suspended. Then, an irrigation suspension auction is held (funding permitting), and eligible agricultural permit holders can submit per acre bids to suspend irrigation on acreage they identify. The Director has the purview to set a cap on the bid amount during the process. An auction may continue iteratively through March 22 of the announced severe drought year. The Director is authorized to enact non-voluntary irrigation acreage reductions if the total acreage voluntarily suspended through the auction process is less than the pre-determined objective. Permittees are compensated based upon the average auction price in such circumstances.

B. Summary

Permitting and water resource management actions as summarized in the Plan are presented below.

- The moratorium on the issuance of agricultural permits within the Flint River Basin was lifted upon approval of the final Plan;
- USGS HUC-12 watersheds within Subarea 4 of the Flint River Basin have been categorized based upon the compounded impacts of permitted irrigation withdrawal quantities and severe drought conditions as modeled in the USGS and EPD hydrologic models. These categories are described in terms of baseflow reduction to the Flint River and are summarized in Table III-1;

Georgia Environmental Protection Division
 Lower Flint-Ochlockonee Council
Existing Regulatory and Local Plan Summary

Table III-1. Use Area Designation			
Area Designation / Sub-basin	CAPACITY USE AREAS	RESTRICTED USE AREAS	CONSERVATION USE AREAS
	MODELED BASEFLOW REDUCTION ¹		
Spring Creek	> 5	1 – 5	< 1
Ichawaynochaway Creek	>10	1 – 10	< 1
Lower Flint River	> 30	3 – 30	< 3

1. All values shown are in cubic feet per second.
 2. These values may change over time as irrigation amounts and patterns change and/or as models are updated.

- USGS HUC-8 watersheds serve as the largest hydrologic units on which water management and permitting decisions are based. Where applicable USGS HUC-12 watershed scales can be also be used;
- The USGS HUC 8 watersheds within the Flint River Basin include: Upper Flint, Middle Flint, Kinchafoonee-Muckalee Creeks, Lower Flint, Ichawaynochaway Creek, and Spring Creek;
- Permit applicants are required to submit proof of ownership or lease of land and latitude/longitude coordinates of proposed well or surface water pumps;
- Permit applications are evaluated for potential impacts to stream flows, impacts to existing permitted users, overlapping radii of influence of adjacent permitted wellheads and proximity to existing users;
- Conservation measures are conditional to all permits issued after January 1, 2006;
- Standard low flow protection plans are standard conditions for newly issued surface water withdrawals within the Spring Creek and Ichawaynochaway sub-basins;
- Use of conservation measures and innovative irrigation technologies are taken into consideration as means of extending irrigation use as long as possible into times of severe drought conditions;
- Permit applicants location of proposed withdrawal, proposed pump capacity, date of application, and date of letter of concurrence are disclosed to the public via internet;

Georgia Environmental Protection Division
Lower Flint-Ochlockonee Council
Existing Regulatory and Local Plan Summary

- Duplicate permits are revoked by EPD. A 30-day appeal period is provided to revoked applicants; and
- The Plan is to be renewed every 3-years to account to reflect additional modeling, ecological, legal, and miscellaneous data.

IV. ATTACHMENTS

Tables as previously described are attached to this technical memorandum in the pages that follow. The tables include the following:

- Table A-1. 305(b)/303(d) Listed Streams
- Table A-2. 305(b)/303(d) Listed Lakes
- Table A-3. Southwest Georgia Regional Commission – Review of Local Comprehensive Plans, Water Resource BMPs
- Table A-4. State and Federally Protected Aquatic Species Specific to the Lower Flint-Ochlockonee Water Planning Region
- Table A-5. High Priority Waters for Protecting Aquatic Biodiversity in the Lower Flint-Ochlockonee Water Planning Region
- Lower Flint-Ochlockonee Council Letter of Support for Golden Triangle RC&D's 319(h) Project in Spring Creek Watershed
 - Project Summary from Section 319(h) Grant Application: Addressing Unpaved Road Issues in the Spring Creek Watershed/ Lower Flint-Ochlockonee Water Council Area

Georgia Environmental Protection Division
 Lower Flint-Ochlockonee Council
Existing Regulatory and Local Plan Summary

Table A-1. 305(b)/303(d) Listed Streams										
<i>Stream Data</i>					<i>305(b)/303(d) & TMDL Data</i>					
HUC 12	Reach Name	County	Location Description	Stream Extension (miles)	303(b)/303(d) Assessment Category	Criterion Violated ¹	Potential Cause Code ²	Water Use	Evaluation	TMDL Implementation Plan -OR- Priority Year
Chattahoochee River Basin										
031300040501	Chattahoochee River	Clay/ Early	D/S Fort Gaines to Lake Andrews	16	1	-	-	Fishing	Supporting	-
031300040502	Coheelee Creek	Early	Chancy Mill Creek to Chattahoochee River	5	4a	Bio F	NP	Fishing	Not Supporting	2004
031300040503	Odum Creek	Early	Headwaters to Chattahoochee River	4	3			Fishing	Assessment Pending	
031300040703	Sawhatchee Creek	Early	Weaver Creek to Sheffield Mill Creek	2	1	-	-	Fishing	Supporting	-
031300040704	Weaver Creek	Early	Headwaters to Sawhatchee Creek	5	4a	Bio F	NP	Fishing	Not Supporting	2004
031300040705	Chattahoochee River	Early/ Seminole	Lake Andrews Lock & Dam to U.S. Hwy. 84	11	1	-	-	Fishing	Supporting	-
031300040706	Kirkland Creek	Early	Dry Creek to Chattahoochee River	4	1	-	-	Fishing	Supporting	-
031300040707	Sawhatchee Creek	Early	Headwaters to Weaver Creek	9	1	-	-	Fishing	Supporting	-
031300040801	Chattahoochee River	Early/ Seminole	U.S. Hwy. 84 to Lake Seminole	17	1	-	-	Recreation	Supporting	-
Flint River Basin										
031300060701	Chokee Creek	Lee	Mill Creek to Flint River	6	1	-	-	Fishing	Supporting	-
031300060902	Mercer Mill Creek (Mill Creek)	Worth	Boy Scout Road to Flint River	7	4a	Bio F	NP	Fishing	Not Supporting	2004
031300070401	Bear Creek	Terrell	Long Branch to Reedy Creek	9	1	-	-	Fishing	Supporting	-
031300070402	Tributary to Bear Creek	Terrell/ Webster	Headwaters to Bear Creek	3	5	Bio M	NP	Fishing	Not Supporting	2017
031300070501	Chokeelagee Creek	Lee	Headwaters to Kinchafoonee Creek	10	1	-	-	Fishing	Supporting	-
031300070602	Middle Creek	Terrell	Headwaters to Kinchafoonee Creek	8	4a	Bio F	NP	Fishing	Not Supporting	2004
031300070603	Fowltown Creek	Lee	D/S Armena Rd. To Kinchafoonee Creek	6	4a	FC	NP	Fishing	Not Supporting	2004
031300070604	Kinchafoonee Creek	Terrell/ Sumter/ Lee/ Dougherty	Ga. Hwy. 45 (Webster Co. Line) to Lake Chehaw/Worth	40	1	-	-	Fishing	Supporting	-
031300070902	Muckaloochee Creek	Lee	Smithville Pond [aka Wells Mill Pond] to Muckalee Creek	10	4a	FC	M, NP	Fishing	Not Supporting	2004

Georgia Environmental Protection Division
 Lower Flint-Ochlockonee Council
Existing Regulatory and Local Plan Summary

Table A-1. 305(b)/303(d) Listed Streams										
<i>Stream Data</i>					<i>305(b)/303(d) & TMDL Data</i>					
HUC 12	Reach Name	County	Location Description	Stream Extension (miles)	303(b)/303(d) Assessment Category	Criterion Violated¹	Potential Cause Code²	Water Use	Evaluation	TMDL Implementation Plan -OR- Priority Year
031300071001	Muckalee Creek	Lee	Sumter Co. Line to Pirates Cove Rd., Leesburg	20	1	-	-	Fishing	Supporting	-
031300080101	Flint River	Dougherty/ Mitchell	Muckafoonee Creek to Raccoon Creek	23	1	-	-	Fishing	Supporting	-
031300080103	Tributary to Flint River	Dougherty	Headwaters to Flint River	6	3			Fishing	Assessment Pending	
031300080301	Cooleewahee Creek	Dougherty/ Baker	Piney Woods Branch to Flint River near Newton	16	4a	FC, Bio F	NP	Fishing	Not Supporting	2004
031300080401	Flint River	Mitchell	Raccoon Creek to Ichawaynochaway Creek	28	1	-	-	Fishing	Supporting	-
031300080501	Big Slough	Mitchell	Near Pelham	4	4a	DO, FC	UR	Fishing	Not Supporting	2004
031300080601	Big Slough	Decatur	Bainbridge	5	1	-	-	Fishing	Supporting	-
031300080801	Flint River	Decatur	Big Slough to 1 mi. downstream State docks	5	1	-	-	Fishing	Supporting	-
031300080802	Fourmile Creek	Decatur	Headwaters to Spring Creek	4	1	-	-	Fishing	Supporting	-
031300090101	Wolf Creek	Terrell	Headwaters to Ichawaynochaway Creek	9	4a	Bio F	NP	Fishing	Not Supporting	2004
031300090102	Ichawaynochaway Creek	Terrell/ Randolph	Wolf Creek to Little Ichawaynochaway Creek	1	1	-	-	Fishing	Supporting	-
031300090301	Ichawaynochaway Creek	Terrell/ Randolph/ Calhoun	Walk Ikey Creek to Falling Creek	7	1	-	-	Fishing	Supporting	-
031300090501	Pachitla Creek	Calhoun	Parkins Creek to Bay Branch near Edison	5	1	-	-	Fishing	Supporting	-
031300090502	Little Pachitla Creek	Calhoun	Fellows Branch to Bear Creek	7	1	-	-	Fishing	Supporting	-
031300090503	Tributary to Pachitla Creek	Calhoun	Headwaters to Pachitla Creek	1	3			Fishing	Assessment Pending	
031300090601	Ichawaynochaway Creek	Baker	Calhoun Co. Line to Flint River	35	1	-	-	Fishing	Supporting	-
031300090701	Brantley Creek	Terrell	Downstream Dawson WPCP	2	3			Fishing	Assessment Pending	

Georgia Environmental Protection Division
 Lower Flint-Ochlockonee Council
Existing Regulatory and Local Plan Summary

Table A-1. 305(b)/303(d) Listed Streams										
<i>Stream Data</i>					<i>305(b)/303(d) & TMDL Data</i>					
HUC 12	Reach Name	County	Location Description	Stream Extension (miles)	303(b)/303(d) Assessment Category	Criterion Violated¹	Potential Cause Code²	Water Use	Evaluation	TMDL Implementation Plan -OR- Priority Year
031300090702	Chickasawhatchee Creek	Dougherty	Dougherty County	12	1	-	-	Fishing	Supporting	-
031300090703	Chickasawhatchee Creek	Terrell	Brantley Creek to Herod Creek	4	1	-	-	Fishing	Supporting	-
031300090704	Brantley Creek	Terrell	2 miles d/s Dawson WPCP to Chickasawhatchee Creek	4	1	-	-	Fishing	Supporting	-
031300090705	Tributary to Chickasawhatchee Creek	Calhoun	Headwaters to Chickasawhatchee Creek	4	3			Fishing	Assessment Pending	
031300090801	Kiokee Creek	Dougherty	Mud Creek to Hwy 62	3	1	-	-	Fishing	Supporting	-
031300090802	Kiokee Creek	Terrell/ Dougherty	Headwaters to Tallahassee Creek	7	3			Fishing	Assessment Pending	
031300090901	Keel Creek	Calhoun/ Baker	Headwaters to Chickasawhatchee Creek	6	3			Fishing	Assessment Pending	
031300091001	Big Cypress Creek	Baker	Upstream Ichawaynochaway Creek, Near Newton	6	1	-	-	Fishing	Supporting	-
031300091002	Chickasawhatchee Creek	Baker	Dougherty Co. Line to Ichawaynotchaway Creek, Elmodel	10	1	-	-	Fishing	Supporting	-
031300100201	Baptist Branch	Early	Downstream Blakely	2	4a	Bio F	UR	Fishing	Not Supporting	2004
031300100202	Dry Creek	Early	Headwaters, d/s Blakely, to Spring Creek	12	4a	DO	UR	Fishing	Not Supporting	2004
031300100401	Cypress Creek	Miller	U/S Aycocks Creek near Colquitt	4	1	-	-	Fishing	Supporting	-
031300100402	Aycocks Creek	Miller	Kaney Head Creek to Spring Creek	15	4a	FC	NP	Fishing	Not Supporting	2001
031300100501	Big Drain Creek	Early	U/S Spring Creek, Boykin	2	1	-	-	Fishing	Supporting	-
031300100601	Tributary to Dry Creek	Miller	Headwaters to Dry Creek	5	3			Fishing	Assessment Pending	
031300100702	Spring Creek	Early/ Miller	SR62 near Arlington to Aycocks Creek	22	4a	DO, Bio F	UR	Fishing	Not Supporting	?
031300100703	Spring Creek	Decatur	Aycocks Creek to Lake Seminole	15	5	TWR	NP	Fishing	Not Supporting	?
031300100801	Fish Pond Drain	Seminole	U.S. Hwy. 84, Donalsonville to Wash Pond	7	4a	FC, DO	UR	Fishing	Not Supporting	2001 (FC), 2004 (DO)

Georgia Environmental Protection Division
 Lower Flint-Ochlockonee Council
Existing Regulatory and Local Plan Summary

Table A-1. 305(b)/303(d) Listed Streams										
<i>Stream Data</i>					<i>305(b)/303(d) & TMDL Data</i>					
HUC 12	Reach Name	County	Location Description	Stream Extension (miles)	303(b)/303(d) Assessment Category	Criterion Violated ¹	Potential Cause Code ²	Water Use	Evaluation	TMDL Implementation Plan -OR- Priority Year
031300100802	Tributary to Fish Pond Drain	Early/Seminole	Headwaters to Fish Pond Drain	6	3			Fishing	Assessment Pending	
031300110201	North Mosquito Creek	Decatur	Florida State Line to Mosquito Creek	7	1	-	-	Fishing	Supporting	-
Ochlockonee River Basin										
031101030101	Olive Creek	Thomas	Headwaters to upstream U.S. Hwy. 19, Thomasville	3	4a	DO, FC	UR	Fishing	Not Supporting	2002
031101030102	Aucilla River	Thomas	Masse Branch to Brooks County line near Boston	10	4a	DO, FC	NP	Fishing	Not Supporting	2002
031101030103	Olive Creek	Thomas	Headwaters to Aucilla River	7	3			Fishing	Assessment Pending	
031101030201	Connell Creek	Thomas	Headwaters to Aucilla River	10	5	Bio M	NP	Fishing	Not Supporting	2015
031200010101	Wards Creek	Thomas	Pine Cr. to McKeever Slough E. of Metcalf	3	4a	DO	NP	Fishing	Not Supporting	2002
031200020102	Little Creek	Colquitt	Ga. Hwy. 37 to Ochlockonee River near Moultrie	9	5	FC	NP	Fishing	Not Supporting	2015
031200020103	Ochlockonee River	Colquitt	D/S Ga. Hwy. 270 to Wolf Pit Branch(d/s Giles Millpond)	7	4a,5	DO, FC	NP	Fishing	Not Supporting	2015
031200020104	Ochlockonee River	Worth	Headwaters, upstream Ga. Hwy. 112 near Sylvester to Bay Branch, E. of Bridgeboro	8	4a	FC	NP	Fishing	Not Supporting	2002
031200020105	Ochlockonee River	Colquitt/Thomas	SR 37 downstream Moultrie to Bridge Creek	14	4a	FCG(Hg)	NP, M	Fishing	Not Supporting	2002
031200020201	Bridge Creek	Colquitt/Thomas	Upstream Ga. Hwy. 111 near Moultrie to Ochlockonee River	10	1	-	-	Fishing	Supporting	-
031200020202	Bridge Creek	Colquitt	Mill Cr. to upstream Ga. Hwy. 111 near Moultrie	7	4a	FC	NP	Fishing	Not Supporting	2002
031200020302	Big Creek	Thomas	Woodhaven Rd. E. of Coolidge to Ochlockonee River	12	4a	DO, FC	NP	Fishing	Not Supporting	2002
031200020401	Little Ochlockonee River	Thomas	Big Cr. to Ochlockonee River near Ochlocknee	9	1	-	-	Fishing	Supporting	-

Georgia Environmental Protection Division
 Lower Flint-Ochlockonee Council
Existing Regulatory and Local Plan Summary

Table A-1. 305(b)/303(d) Listed Streams										
<i>Stream Data</i>					<i>305(b)/303(d) & TMDL Data</i>					
HUC 12	Reach Name	County	Location Description	Stream Extension (miles)	303(b)/303(d) Assessment Category	Criterion Violated ¹	Potential Cause Code ²	Water Use	Evaluation	TMDL Implementation Plan -OR- Priority Year
031200020402	Big Creek	Mitchell/Thomas	Headwaters to Little Cr. near Meigs	12	4a	FC	NP	Fishing	Not Supporting	2002
031200020403	Lost Creek	Mitchell/Colquitt	Upstream Ga. Hwy. 93 N.E. of Cotton to Little Ochlockonee River	9	4a	FC	NP	Fishing	Not Supporting	2002
031200020404	Little Ochlockonee River	Colquitt	Slocumb Branch to downstream SR 111 near Moultrie	9	4a	FC	NP	Fishing	Not Supporting	2002
031200020501	Barnetts Creek	Thomas/Grady	West Branch to Ochlockonee River, W. of Thomasville	8	1	-	-	Fishing	Supporting	-
031200020502	E. Br. Barnetts Creek	Thomas	Horse Cr. to Barnetts Cr. near Ochlockonee	3	5	FC	NP	Fishing	Not Supporting	2015
031200020601	Oquina Creek	Thomas	Bruces Branch to Cassidy Rd., Thomasville	2	4a	FC	UR	Fishing	Not Supporting	2002
031200020701	Ochlockonee River	Thomas	Bridge Cr. to Oquina Creek	16	4a	TWR	NP	Fishing	Not Supporting	?
031200020801	Parkers Mill Creek	Grady	Headwaters to Tired Cr., Cairo	5	4a	FC	M	Fishing	Not Supporting	2002
031200020802	Little Tired Creek	Grady	SR188 downstream Cairo to Tired Cr.	6	4a	FC	UR	Fishing	Not Supporting	2002
031200020803	Tired Creek	Grady	Wolf Cr. to Parkers Mill Cr. near Cairo	4	1	-	-	Fishing	Supporting	-
031200020804	Tired Creek	Grady	Turkey Cr. to Ochlockonee River	6	4a	FC, Bio M	NP	Fishing	Not Supporting	2002
031200030101	Ochlockonee River	Thomas/Grady	Oquina Creek to Stateline	33	4a	FCG(Hg)	NP	Fishing	Not Supporting	2002
031200030102	Hadley Creek	Grady	Headwaters to Ochlockonee River	4	1	-	-	Fishing	Supporting	-
031200030201	Swamp Creek	Decatur	SR 262 to Stateline	4	4a	FC	NP	Fishing	Not Supporting	2002
031200030202	Little Attapulgus Creek	Decatur	Downstream Crescent Lake to Attapulgus Creek	4	4a	FC	NP	Fishing	Not Supporting	2002
031200030203	Attapulgus Creek	Decatur	Callahan Br. to Little Attapulgus Cr.	8	4a	FC	NP	Fishing	Not Supporting	2002
031200030204	Callahan Branch	Decatur	Headwaters to Attapulgus Creek	4	1	-	-	Fishing	Supporting	-
031200030205	Tributary to Willacoochee Creek	Decatur	Headwaters to Willacoochee Creek	6	3			Fishing	Assessment Pending	
Suwannee River Basin										
031102020205	Tributary to West Fork Deep Creek	Crisp/ Turner	Headwaters to West Fork Deep Creek	3	3			Fishing	Assessment Pending	

Georgia Environmental Protection Division
 Lower Flint-Ochlockonee Council
Existing Regulatory and Local Plan Summary

Table A-1. 305(b)/303(d) Listed Streams										
<i>Stream Data</i>					<i>305(b)/303(d) & TMDL Data</i>					
HUC 12	Reach Name	County	Location Description	Stream Extension (miles)	303(b)/303(d) Assessment Category	Criterion Violated ¹	Potential Cause Code ²	Water Use	Evaluation	TMDL Implementation Plan -OR- Priority Year
031102020206	Deep Creek	Crisp	Headwaters to Red Oak Creek	4	3			Fishing	Assessment Pending	
031102020207	Red Oak Creek	Crisp	Headwaters to Deep Creek	12	5	Bio M	NP	Fishing	Not Supporting	2015
031102030501	Okapilco Creek	Colquitt	SR 37 to Hog Cr., S. of Moultrie	10	4a,5	DO, FC	UR	Fishing	Not Supporting	2015
031102030502	Okapilco Creek	Colquitt	Upstream SR S1540 to U.S. Hwy. 319, Moultrie	10	5	FC	NP	Fishing	Not Supporting	2015
031102040105	Little River	Tift/ Colquitt/ Cook	Big Branch to Warrior Creek	24	1	-	-	Fishing	Supporting	-
031102040201	Ty Ty Creek	Colquitt	Tucker Cr. to Warrior Cr. near Omega	9	4a	DO	NP	Fishing	Not Supporting	2002
031102040202	Ty Ty Creek	Worth/ Tift	Little Cr. near Ty Ty to Tucker Cr. near Omega	10	4a	FC	NP	Fishing	Not Supporting	2002
031102040301	Warrior Creek	Colquitt	Rock Cr. to Ty Ty Cr. near Norman Park	8	1	-	-	Fishing	Supporting	-
031102040302	Warrior Creek	Worth/ Colquitt	Horse Cr. to Rock Cr. near Norman Park	10	4a,5	DO, FC	NP	Fishing	Not Supporting	2002 (DO), 2015 (FC)
031102040303	Warrior Creek	Worth	Briar Creek to Horse Creek	3	1	-	-	Fishing	Supporting	-
031102040304	Horse Creek	Worth	Headwaters near Sylvester to Warrior Cr.	13	1	-	-	Fishing	Supporting	-
031102040305	Town Creek	Worth	Headwaters to Warrior Cr. near Sylvester	9	4a	DO	UR	Fishing	Not Supporting	
031102040306	Warrior Creek	Worth	Headwaters to Town Creek	12	3			Fishing	Assessment Pending	
031102040401	Indian Creek	Colquitt	Upstream Little River near Berlin	4	4a	DO	NP	Fishing	Not Supporting	
031102040402	Bear Creek	Colquitt	Reedy Cr. to Indian Cr. near Berlin	7	4a	DO	UR	Fishing	Not Supporting	

Notes:

- 1.) BioF = Biota Impacted (Fish Community); BioM = Biota Impacted (Macroinvertebrate Community); DO = Dissolved Oxygen; FC = Fecal Coliform; FCG = Fish Consumption Guidance; TWR = Trophic-Weighted Residue Value of mercury in fish tissue exceeding the EPD human health standard of 0.3 mg/kg
- 2.) M = Municipal Facility; NP = Nonpoint Source/Unknown Source; UR = Urban Runoff/Urban Effects

Georgia Environmental Protection Division
 Lower Flint-Ochlockonee Council
Existing Regulatory and Local Plan Summary

Table A-2. 305(b)/303(d) Listed Lakes										
<i>Lake Data</i>					<i>305(b)/303(d) & TMDL Data</i>					
HUC 12	Lake Name	County	Location Description	Lake Area (acres)	303(b)/303(d) Assessment Category	Criterion Violated ¹	Potential Cause Code ²	Water Use	Evaluation	TMDL Implementation Plan -OR- Priority Year
Chattahoochee River Basin										
031300040202	Kolomoki Lake	Early	Kolomoki Mounds State Park, Early County	57	3			Fishing	Assessment Pending	
031300040203	Yohola Lake	Early	Kolomoki Mounds State Park, Early County	57	3			Fishing	Assessment Pending	
Flint River Basin										
031300040802	Seminole Lake	Seminole/Decatur	Seminole and Decatur Counties	37515	1	-	-	Recreation	Supporting	
031300060612	Blackshear Lake	Crisp/Sumter/Dooly/Lee	Crisp, Sumter, Lee, Dooly Counties	8518	1	-	-	Recreation	Supporting	
031300060903	Worth Lake	Dougherty	Flint River Reservoir, Dougherty County	1401	1	-	-	Recreation	Supporting	
031300070605	Ken Gardens Lake	Dougherty	Dougherty County	4	3			Fishing	Assessment Pending	
Suwannee River Basin										
031300080102	Albany By-Pass Pond	Dougherty	Dougherty County	20	4a	FCG(DDE/DDD)	UR, NP	Fishing	Not Supporting	
031102040403	Reed Bingham Lake	Colquitt/Cook	Reed Bingham State Park	179	5	TWR	NP	Fishing	Not Supporting	2015

Notes:

- 1.) FCG = Fish Consumption Guidance; TWR = Trophic-Weighted Residue Value of mercury in fish tissue exceeding the EPD human health standard of 0.3 mg/kg
- 2.) NP = Nonpoint Source/Unknown Source; UR = Urban Runoff/Urban Effects

Georgia Environmental Protection Division
 Lower Flint-Ochlockonee Council
Existing Regulatory and Local Plan Summary

Table A-3. Southwest Georgia Regional Commission – Review of Local Comprehensive Plans for Water Quality/Quantity BMPs					
Short Term Work Program Project	Fiscal Year	Responsible Party	Cost Estimate	Funding Source	Type Water Management
<i>Baker County - LFO</i>					
Continue support of Best Management Practices as advocated by Natural Resources agencies, and enforcement of Clean Water Act, Endangered Species Act, environmental ordinances, Soil and Sedimentation Act and related agricultural regulations.	2007-2011	County, NRCS, Forestry Service, RDC	N/A	Operating Budget	Water quality
Appoint local representatives, as needed, to attend River Basin Management Plan meetings.	2008-2009	County	N/A	General Fund	Water quality
Continue road and drainage projects according to current annual priority list	2007-2011	County, DOT	\$1 Million	County, DOT, Grants	Water quality
<i>Newton</i>					
Continue support of Best Management Practices as advocated by Natural Resources agencies, and enforcement of Clean Water Act, Endangered Species Act, environmental ordinances, Soil and Sedimentation Act and related agricultural regulations	2007-2011	County, NRCS, Forestry Service, RDC	N/A	Operating Budget	Water quality
Construct Waste Water Treatment Plan	2010, 2011	City	\$3 Million	Bonds, SPLOST, Loans	Water quality
Require certification training for new water system operators	2010, 2011	City	\$1,000	Operating Budget	Water quality
<i>Calhoun County - LFO</i>					
<i>Arlington</i>					
Update drainage throughout city	2010- 2012	City	\$300,000	CDBG, General Fund	Water quality
Repair and replace existing sewer lines as indicated	2009-2013	City	\$250,000	CDBG, General Fund	Water quality
<i>Edison</i>					
Improve drainage areas.	2009-2013	City	\$200,000	CDBG, General Fund	Water quality
Provide new water/sewer services in newly developed subdivisions.	2009-2013	City	\$200,000	Grants, General Fund	Water quality
<i>Leary</i>					
Improve areas having poor drainage	2012-2014	City	\$500,000	CDBG, General Fund	Water quality
Make improvements to sewer treatment plant	2010-2011	City	\$200,000	CDBG, General Fund	Water quality
Extend water mains to un-served areas	2009-2013	City	\$200,000	CDBG, General Fund	Water quality
<i>Morgan</i>					
(no recent approved plan)					
<i>Colquitt County - LFO</i>					

Georgia Environmental Protection Division
 Lower Flint-Ochlockonee Council
Existing Regulatory and Local Plan Summary

Table A-3. Southwest Georgia Regional Commission – Review of Local Comprehensive Plans for Water Quality/Quantity BMPs					
Short Term Work Program Project	Fiscal Year	Responsible Party	Cost Estimate	Funding Source	Type Water Management
<i>Berlin</i>					
Provide infrastructure in neighborhoods to improve drainage problems	2009-2011	City	\$500,000	CDBG, Local Funds	Water quality
New Water Tower and well	2009-2011	City	\$500,000	CDBG, Local Funds	Water quality
Upgrade substandard water lines from 2” to 6”/fire hydrants	2010, 2012	City	\$300,000	Local, CDBG	Water quantity
<i>Doerun</i>					
Upgrade wastewater collection system to combat infiltration problems	2008-2012	City	\$300,000	Grants	Water quality
Construct new elevated water tank and well	2010	City	\$500,000	City, Grants	Water quality and water quantity
Street improvements (curb, gutter, resurface)	2008-2012	City	\$185,000	SPLOST	Water quality
<i>Ellenton</i>					
Apply for CDBG to develop sanitary sewer systems	2008-2012	City	\$500,000	CDBG, General Funds, GEFA, Loans	Water quality
Street repairs and improvements (resurfacing and drainage improvements) Church Street, Peachtree Street	2008 – 2012	City, DOT	\$300,000	DOT, LARP Program, General Funds, SPLOST, CDBG	Water quality
<i>Funston</i>					
Make curb and gutter improvements to South Manning, Spivey Drive, and Foy Street, Peachtree Circle, Peachtree Street, Anderson Street, Pitchford Street	2009	City	\$200,000	General Funds/SPLOST, CDBG	Water quality
Paint elevated water tank (inside and outside)	2011-2012	City	\$60,000	SPLOST	Water quality
Explore resources for well construction	2008-2012	City	\$500,000	CDBG, General Funds	
<i>Moultrie</i>					
Complete watershed assessment and study the development and implementation of storm water management utility	2008, 2009, 2010	City	\$100,000	Water Pollution Control Fund, SPLOST	Water quality
Maintain Storm water management project areas	2010, 2011, 2012	City	TBD	General fund, utility fund	Water quality
Increase sewer capacity	2008-2012	City	\$25 million	SPLOST, Revenue Bonds	Water quality
Expand water service area in parts of the County	2008-2012	City	\$1.2 million	Revenue Bonds	Water quality and water quantity
<i>Norman Park</i>					
Provide infrastructure improvements in targeted residential areas	2009, 2010	City	\$100,000	General Fund, Grants	Water quality and water quantity
<i>Decatur County - LFO</i>					

Georgia Environmental Protection Division
 Lower Flint-Ochlockonee Council
Existing Regulatory and Local Plan Summary

Table A-3. Southwest Georgia Regional Commission – Review of Local Comprehensive Plans for Water Quality/Quantity BMPs					
Short Term Work Program Project	Fiscal Year	Responsible Party	Cost Estimate	Funding Source	Type Water Management
Research feasibility of adopting comprehensive stormwater management ordinances	2011	County	N/A		Water quality
Regulate development in floodplains and stormwater management areas	2008-2012	County	\$1,000	GF	Water quality
Limit the density and intensity over groundwater recharge areas	2008	County	N/A		Water quality
Protect and expand tree cover in county	2008	County	N/A		Water quality
Research the feasibility of enacting ordinances to protect steep slopes	2008	County	N/A		Water quality
Enforce soil erosion and sedimentation control ordinances	2008	County	N/A		Water quality
Adopt the appropriate Part V environmental ordinances	2008	County	N/A		Water quality
Attapulcus					
Paint water tank	2009-2010	City	\$25,000	SPLOST/General Funds	Water quality
Acquire additional property for water and septic improvements	2008-2012	City	\$25,000	SPLOST	Water quality
Purchase a new water tank as needed	2012	City	\$500,000	CDBG	Water quality and
Develop preliminary drainage improvement study for the City	2008-2012	City	\$10,000	General Funds	Water quality
Bainbridge					
Purchase new diffusers for treatment plant	2008	City	\$12,000	General Funds	Water quality
Part Time Soil Erosion Position	2008- 2009	City	\$12,000	General Funds	Water quality
Purchase Street Sweeper	2008	City	\$90,000	General Funds	Water quality
Upgrade Sewage Treatment Plant	2008	City	\$1.5 million	Water and Sewer Funds	Water quality
Upgrade Sewer Lift Station Pumps	2008-2009	City	\$120,000	Water and Sewer Funds	Water quality
Brinson					
Review, and amend if necessary, the zoning ordinance to ensure that it encourages green space preservation	2010	City	N/A		Water quality
Climax					
Install water pipes city wide	2008-2012	City	\$500,000	CDBG/SPLOST	Water quality and water quantity
Install city wide surface water drainage system	2008-2012	City	\$500,000	CDBG/SPLOST	Water quality
Albany/Dougherty County - LFO					
Water system improvements in South Dougherty County due to high nitrates.	2009	Albany Water Gas and Light Commission	\$1.2 million	SPLOST	Water quality
Complete the expansion of the Joshua Road Wastewater Pollution Control Plant to provide sufficient capacity throughout the planning period.	2009	Albany Engineering Department	\$11 million	SPLOST	Water quality

Georgia Environmental Protection Division
 Lower Flint-Ochlockonee Council
Existing Regulatory and Local Plan Summary

Table A-3. Southwest Georgia Regional Commission – Review of Local Comprehensive Plans for Water Quality/Quantity BMPs					
Short Term Work Program Project	Fiscal Year	Responsible Party	Cost Estimate	Funding Source	Type Water Management
Upgrade force main at lift station 4	2005-2006	Albany Engineering Dept.	\$255,000	SPLOST	Water quality
County Sewer Extensions	2010-2015	County	\$1 million	SPLOST	Water quality
Complete project separating sanitary and storm water sewers. (CSOs).	2005-2006	City of Albany Engineering and Public Works Departments	\$500,000	To be determined	Water quality
Holloway Storm Drainage I, II, II, IV & V	2005-2006	City of Albany Engineering and Public Works Departments	\$6.46 million	SPLOST	Water quality
Adopt and implement a stormwater management plan for Albany and Dougherty County. (Currently in study)	2005-2006	City of Albany Engineering and Public Works Departments	To be determined	To be determined	Water quality
Storm Drainage control (per DCED), as indicated in the East Albany Urban Redevelopment Plan.	2009	City of Albany Public Works Dept.	\$100,000	SPLOST III and IV	Water quality
Completion of stormwater drainage system construction west of Westtown Road to alleviate flooding at the corner of Westtown and Industry Avenue.	2005-2006	City of Albany Engineering Department	\$6.46 million	SPLOST	Water quality
Early County - LFO					
None					
Blakely					
Inventory/map environmentally sensitive areas	2009-2010	City	\$\$	Grants General Funds	Water quality
Damascus					
Revise ordinances to promote environmentally sensitive site design	2009-2010	City	\$	Grants General Funds	Water quality
Jakin					
None					
Grady County - LFO					

Georgia Environmental Protection Division
 Lower Flint-Ochlockonee Council
Existing Regulatory and Local Plan Summary

Table A-3. Southwest Georgia Regional Commission – Review of Local Comprehensive Plans for Water Quality/Quantity BMPs					
Short Term Work Program Project	Fiscal Year	Responsible Party	Cost Estimate	Funding Source	Type Water Management
Support land and soil conservation programs sponsored by the ASCS and SC	2007- 2011	County	\$	Operating Budget	Water quality
Encourage agricultural buffers	2007- 2011	County	\$	Operating Budget	Water quality
Budget for water distribution maintenance	2007- 2011	County	\$\$	Operating Budget	Water quality
Consider development of a well-head protection ordinance	2007- 2011	County	\$	Operating Budget	Water quality
Adopt required environmental ordinances: Wetlands, Groundwater recharge	2007	County	\$	Operating Budget	Water quality
Continue support of Regional Water Resource Planning Program	2007- 2011	County	\$	Operating Budget	Water quality
Promote Water Conservation and Water Quality Initiatives	2007- 2011	County	\$	Operating Budget	Water quality and water quantity
Continue enforcement of erosion and sediment control ordinances	2007- 2011	County	\$	Operating Budget	Water quality
Support best management practices of the Soil Conservation Service	2007- 2011	County	\$	Operating Budget	Water quality
Continue to monitor development of the River Basin Management Plan and promote river corridor protection measures	2007- 2011	County	\$	Operating Budget	Water quality
Cairo					
Convert LAS Reservoir to Effluent Equalization Pond	2007	City	\$400,000	Grants/Loans	Water quality
Determine Future Use of Land Application System	2008	City	\$250,000	Grants/Loans	Water quality
Expand Existing Wastewater Treatment Plant	2011	City	\$1.5 million	Grants/Loans	Water quality
Construct Water Storage Facility (Elevated Tank) and add well sites	2008	City	\$1.75 million	Grants/Loans	Water quality and water quantity
Whigham					
Adopt required environmental ordinances: wetland, groundwater recharge.	2011	City	N/A		Water quality
Make needed improvements to the municipal water system	2008- 2011	City	\$1 million	General Fund/ CDBG	Water quality and water quantity
Lee County - LFO					
Expand the Utilities Authority's water system and plan for the Authority's wastewater system. Maintain and expand Leesburg's and Smithville's water and wastewater system.	2007-2011	Lee County	\$10 million	General Fund, Utilities Authority Revenue, State and Federal Loans	Water quality and water quantity
Ensure future improvements to water and treatment facilities that promotes urban growth and maximizes the use of existing facilities.	2007-2011	Lee County, Lee County Utilities Authority	Unknown	Unknown	Water quality and water quantity
Continue to provide proper treatment and disposal of wastewater.	2007-2011	Lee County, Lee County Utilities Authority	Unknown	Unknown	Water quality
Implement a plan to discourage developments with septic systems and private treatment systems.	2007-2011	Lee County, Lee County	Staff Time	Unknown	Water quality

Georgia Environmental Protection Division
 Lower Flint-Ochlockonee Council
Existing Regulatory and Local Plan Summary

Table A-3. Southwest Georgia Regional Commission – Review of Local Comprehensive Plans for Water Quality/Quantity BMPs					
Short Term Work Program Project	Fiscal Year	Responsible Party	Cost Estimate	Funding Source	Type Water Management
		Utilities Authority			
Ensure proper sanitary sewage system practices.	2007-2011	Lee County	Staff Time	1% SPLOST, General Fund, State Grants	Water quality
Prepare a wetland, groundwater recharge, public water source, and environmentally significant property inventory list and protection plan.	2007, 2008	Lee County	Staff Time	N/A	Water quality
Protect and maintain the quality and quantity of groundwater.	2007-2011	Lee County	Staff Time	N/A	Water quality and water quantity
Develop a comprehensive river and creek corridor protection plan.	2007-2009	Lee County	Staff Time	N/A	Water quality
Protect and maintain the quality and quantity of wetlands in Lee County.	2007-2011	Lee County	Staff Time	N/A	Water quality and water quantity
Soil management to maintain water quality, flood control, erosion control to maintain good till and soil productivity.	2007-2011	Lee County	Staff Time	N/A	Water quality
Leesburg					
Maintain and expand Leesburg's water and wastewater system.	2007-2011	Leesburg	\$6 Million	SPLOST, State/Federal Grants	Water quality and water quantity
Implement a plan to protect potable water supplies.	2007-2011	Leesburg	\$50,000	General Fund/ State Grants	Water quality and water quantity
Smithville					
Maintain and expand Smithville's water and wastewater system.	2007-2011	Smithville	\$100,000	General Fund, State/Fed loans & grants	Water quality and water quantity
Implement a plan to protect potable water supplies.	2007-2011	Smithville	\$15,000	General Fund, State Grants	Water quality and water quantity
Continue to provide proper treatment and disposal of waste water.	2007-2011	Smithville, Lee County Utilities Authority	Unknown	Utilities Authority, State/Fed Grants	Water quality
Ensure future improvements to water and treatment facilities that promote urban growth and maximizes the use of existing facilities.	2007-2011	Smithville, Lee County Utilities Authority	Unknown	Unknown	Water quality and water quantity
Miller County - LFO					
Continue clean up and preservation of Spring Creek	2007-2011	City, County, NRCS	Unknown	Unknown	Water quality
Continue support of Best Management Practices as advocated by Natural Resources agencies, and enforcement of Clean Water Act, Endangered Species Act, environmental ordinances, Soil and Sedimentation Act and related ordinances.	2007-2011	City, County, NRCS	Unknown	Unknown	Water quality

Georgia Environmental Protection Division
 Lower Flint-Ochlockonee Council
Existing Regulatory and Local Plan Summary

Table A-3. Southwest Georgia Regional Commission – Review of Local Comprehensive Plans for Water Quality/Quantity BMPs					
Short Term Work Program Project	Fiscal Year	Responsible Party	Cost Estimate	Funding Source	Type Water Management
Promote use of conservation easements to protect sensitive natural environments, plants and animals.	2007-2011	City, County, NRCS	Unknown	Unknown	Water quality
Promote use of conservation easements to protect sensitive natural environments, plants and animals.	2007-2011	City, County, NRCS	Unknown	Unknown	Water quality
Colquitt					
Continue clean up and preservation of Spring Creek	2007-2011	City, County, NRCS	Unknown	Unknown	Water quality
Continue support of Best Management Practices as advocated by Natural Resources agencies, and enforcement of Clean Water Act, Endangered Species Act, environmental ordinances, Soil and Sedimentation Act and related ordinances.	2007-2011	City, County, NRCS	Unknown	Unknown	Water quality
Promote use of conservation easements to protect sensitive natural environments, plants and animals.	2007-2011	City, County, NRCS	Unknown	Unknown	Water quality
Mitchell County - LFO					
Align county water usage/conservation efforts w/ Georgia Comprehensive Water Management Plan	2008-2012	County	\$5,000	General Funds Grants	Water quality and water quantity
Feasibility study for a water & sewer authority	2008-2011	County	\$50,000	General Funds	Water quality and water quantity
Baconton					
Assess and prioritize the drainage problems in Baconton	2008, 2009	City	\$4,000	General Funds Grants	Water quality
Camilla					
Market the reuse of wastewater for cooling/irrigation to attract industry	2009	City	\$75,000	User Fees, Enterprise Fund	Water quality and water quantity
Develop a wastewater reuse system	2012	City	\$2 Million	General Fund, User Fees, Grants	Water quality and water quantity
Work w/ state & federal agencies on monitoring groundwater/air quality/storm water runoff	2008-2012	City	Staff time	General Fund	Water quality
Pelham					
None					
Sale City					
None					
Seminole County - LFO					
None					
Donalsonville					
Upgrade and raise the capacity of the sewer system	2007-2008	City	\$1 Million	Water and Sewer Funds	Water quality
Increase the number of water mains/loops	2007-2012	City	\$35,000	Water and Sewer Funds	Water quality and water quantity
Iron City					
(None)					

Georgia Environmental Protection Division
 Lower Flint-Ochlocknee Council
Existing Regulatory and Local Plan Summary

Table A-3. Southwest Georgia Regional Commission – Review of Local Comprehensive Plans for Water Quality/Quantity BMPs					
Short Term Work Program Project	Fiscal Year	Responsible Party	Cost Estimate	Funding Source	Type Water Management
Terrell County - LFO					
Study the Feasibility of Developing a Public Water System	2010-2014	County	N/A		Water quality and water quantity
Bronwood					
Replace Undersized Water Mains	2010	City	\$200,000	General Funds/ Grants	Water quality and water quantity
Make City-wide Drainage Improvements	2010-2014	City	\$100,000	General Funds/ Grants	Water quality
Study feasibility for city sewer system	2010	City	N/A		Water quality
Dawson					
Water and Sewer Improvements	2010-2014	City	\$750,000	General Funds/ Grants	Water quality and water quantity
Parrott					
(None)					
Sasser					
Replace Undersized Water Mains	2010-2014	City	\$150,000	General Funds/ Grants	Water quantity
Install new well	2014	City	\$50,000	General Funds/ Grants	Water quality and water quantity
Adopt ground water recharge ordinance (as required)	2014	City	N/A		Water quality
Thomas County - LFO					
Master Plan for Sanitary Sewer Basins in the Service Area.	2010	County Engineer	\$80,000- 100,000	General Fund; possible participation of developers	Water quality
Ochlocknee River Protected River Designation and Regulation	2009	Planning Director, and the Planning Commission	Staff function	General Fund	Water quality
Boston					
Continue tackling existing list of street drainage problems	2008-2012	City	\$30,000	General Fund, Grants	Water quality
Coolidge					
Implement needed water & sewer system improvements, fire hydrants & manholes	2008-2012	City	\$300,000	General Fund, CDBG	Water quality and water quantity
Rehabilitate existing spray field	2008, 2009	City	\$610,000	CDBG, SPLOST	Water quality
Replace old water lines	2008-2012	City	\$500,000	General Fund, CDBG	Water quality and water quantity
Replace Baffles at Wastewater Management Plant	2009	City	\$10,000	Water and Sewer Fund	Water quality
Replace Aerator at Wastewater Management Plant	2008,2009	City	\$15,00	General Fund, Grants	Water quality

Georgia Environmental Protection Division
 Lower Flint-Ochlockonee Council
Existing Regulatory and Local Plan Summary

Table A-3. Southwest Georgia Regional Commission – Review of Local Comprehensive Plans for Water Quality/Quantity BMPs					
Short Term Work Program Project	Fiscal Year	Responsible Party	Cost Estimate	Funding Source	Type Water Management
<i>Meigs</i>					
Improve/replace wastewater treatment plant	2009-2012	City	\$\$\$\$\$	General Fund, Grants	Water quality
Inventory and prioritize future street paving/resurfacing projects and coordinate water/sewer line replacement	2008-2012	City	\$	General Fund	Water quality
<i>Ochlocknee</i>					
Review and revise existing ordinance for best management practices	2008-2012	City	\$	General Fund	Water quality
<i>Thomasville</i>					
Gatlin Creek Road Extension to 84 (4.5 miles)	2012	Water Department	\$850,000		Water quantity
Treatment Plant Upgrades		Sewer Department	\$250,000		Water quality
Prevent Inflow & Infiltration into system (420 manhole per yr)	2008-2012	Sewer Department	\$200,000 min		Water quality
Insituform deteriorating sewer mains & services (2 miles per yr)	2008-2012	Sewer Department	\$400,000		Water quality
Replace Older Water Mains in the System (4 miles per yr)	2008-2012	Water Department	\$600,000 min		Water quantity
Upgrade Sewer Lift Stations (Pumps, Generators, etc)	2008-2012	Sewer Department	\$500,000		Water quality
Automated Meter Reading System	2011	Technical Services/CNS	\$3 million	Budget	Water quantity
Drainage mapping	2010-2012	Engineering	\$100,000	General Fund	Water quality
<i>Worth County - LFO</i>					
Continue to support and implement the County's Storm water Drainage Plan	2008-2012	County, State	\$50,000	General Fund, Grants	Water quality
Update Part 5 Environmental Ordinances, i.e., Wetlands Ordinance, Groundwater Recharge Ordinance, etc..., as necessary	2010-2012	County	N/A		Water quality
<i>Poulan</i>					
Develop joint sewer services implementation and funding plan	2010-2012	City, EDA, Task Force	\$1,000	General Fund	Water quality
Conduct Engineering studies for joint sewer system as feasible	2008-2012	Sewer System Authority	\$2,500	General Fund	Water quality
Develop joint sewer system as feasible	2008-2012	Sewer System Authority	\$2,000,000	CDBG, EDA	Water quality
Study feasibility of storm drainage improvements	2008-2012	City Staff	\$3,000	SPLOST	Water quality
Implement storm drainage improvement as feasible	2008-2012	City Staff	\$500,000	CDBG, General Fund	Water quality

Georgia Environmental Protection Division
 Lower Flint-Ochlockonee Council
Existing Regulatory and Local Plan Summary

Table A-3. Southwest Georgia Regional Commission – Review of Local Comprehensive Plans for Water Quality/Quantity BMPs					
Short Term Work Program Project	Fiscal Year	Responsible Party	Cost Estimate	Funding Source	Type Water Management
<i>Sumner</i>					
Upgrade water system to proposed industrial area within city	2008	City, EDA	\$200,000	General Fund, Grants	Water quality and water quantity
Drill new well	2008	City	\$30,000	SPLOST	
Continue maintenance on city water lines	2008-2012	City	\$15,000 annually	General Fund	Water quality and water quantity
<i>Sylvester</i>					
Expand Water and Sewer lines to additional parts of the city	2008-2012	City	\$350,000	CDBG, General Fund	Water quality and water quantity
Upgrade sewer lines	2008-2012	City	\$2.2 million	Sewer Fund	Water quality
Construct 750,000 gallon water tank, and extensions to Isabella water system	2008-2012	City	\$200,000	GEFA and water enterprise funds	Water quality and water quantity
<i>Warwick</i>					
(None)					

Georgia Environmental Protection Division
 Lower Flint-Ochlockonee Council
Existing Regulatory and Local Plan Summary

Table A-4. State and Federally Protected Aquatic Species Specific to the Lower Flint-Ochlockonee Water Planning Region

Scientific Name	Common Name	Federal Status	State Status	Group
<i>Amphiuma pholeter</i>	One-toed Amphiuma		Rare	Amphibians
<i>Haideotriton wallacei</i>	Georgia Blind Salamander		Threatened	Amphibians
<i>Alosa alabamae</i>	Alabama Shad		Threatened	Fish
<i>Ameiurus serracanthus</i>	Spotted Bullhead		Rare	Fish
<i>Cyprinella callitaenia</i>	Bluestripe Shiner		Rare	Fish
<i>Enneacanthus chaetodon</i>	Blackbanded Sunfish		Endangered	Fish
<i>Micropterus notius</i>	Suwannee Bass		Rare	Fish
<i>Notropis hypsilepis</i>	Highscale Shiner		Rare	Fish
<i>Pteronotropis welaka</i>	Bluenose Shiner		Threatened	Fish
<i>Alasmidonta triangulata</i>	Southern Elktoe		Endangered	Invertebrates
<i>Amblema neislerii</i>	Fat Threeridge	Endangered	Endangered	Invertebrates
<i>Anodonta heardi</i>	Apalachicola Floater		Rare	Invertebrates
<i>Anodontoides radiatus</i>	Rayed Creekshell		Threatened	Invertebrates
<i>Cambarus cryptodytes</i>	Dougherty Plain Cave Crayfish		Threatened	Invertebrates
<i>Cambarus doughertyensis</i>	Dougherty Burrowing Crayfish		Endangered	Invertebrates
<i>Elliptio arctata</i>	Delicate Spike		Endangered	Invertebrates
<i>Elliptio nigella</i>	Winged Spike			Invertebrates
<i>Elliptio purpurella</i>	Inflated Spike		Threatened	Invertebrates
<i>Elliptoideus sloatianus</i>	Purple Bankclimber	Threatened	Threatened	Invertebrates
<i>Hamiota subangulata</i>	Shinyrayed Pocketbook	Endangered	Endangered	Invertebrates
<i>Medionidus penicillatus</i>	Gulf Moccasinshell	Endangered	Endangered	Invertebrates
<i>Medionidus simpsonianus</i>	Ochlockonee Moccasinshell	Endangered	Endangered	Invertebrates
<i>Pleurobema pyriforme</i>	Oval Pigtoe	Endangered	Endangered	Invertebrates
<i>Procambarus gibbus</i>	Muckalee Crayfish		Threatened	Invertebrates
<i>Strophitus subvexus</i>	Southern Creekmussel		Endangered	Invertebrates
<i>Graptemys barbouri</i>	Barbour's Map Turtle		Threatened	Reptiles
<i>Macrochelys temminckii</i>	Alligator Snapping Turtle		Threatened	Reptiles

Notes: Data provided by the Department of Natural Resources – Wildlife Resources Division. Detailed species accounts are available at the following website: <<http://www.georgiawildlife.com/node/1379>>

Georgia Environmental Protection Division
 Lower Flint-Ochlockonee Council
Existing Regulatory and Local Plan Summary

Table A-5, High Priority Waters for Protecting Aquatic Biodiversity in the Lower Flint-Ochlockonee Water Planning Region	
Classification	Waters
High Priority Aquatic Community Stream	None
High Priority Species Stream	Cooleewahee Creek, Swift Creek, Flint River, Sawhatchee Creek, Kirkland Creek, Dry Creek, Spring Creek, Ochlockonee River Tributary, Ochlockonee River, Muckalee Creek, Flint River, Ichawaynochaway Creek, Chickasawhatchee Creek, Wolf Creek, Big Creek Tributary, Abrams Creek, Mill Creek
High Priority Species and Aquatic Community Streams	None
Source: Georgia Rare Species and Natural Community Information: High Priority Waters. Georgia Department of Natural Resources – Wildlife Resources Division, < http://www.georgiawildlife.com/node/1377 >	

The logo for Georgia's State Water Plan features a blue outline of the state of Georgia on the left. To its right, the text "Georgia's" is in a smaller blue font, and "State Water Plan" is in a larger, bold blue font. A horizontal blue brushstroke underline extends from the bottom of the state outline across the text.

Georgia's State Water Plan

Lower Flint-Ochlockonee Water Council

February 21, 2011

Tim Cash
Georgia Environmental Protection Division
4220 International Parkway, Suite 101
Atlanta, GA 30354

Dear Tim:

As you know, at its last meeting, the Lower Flint-Ochlockonee Water Council approved, by full consensus of the council, support for a Section 319(h) grant proposal from the Golden Triangle Resource Conservation and Development (RC& D) Council.

Last fall, the council was informed by EPD of an opportunity created by the Section 319(h) grant program for funding for nonpoint source control projects identified by the regional water councils. The Golden Triangle RC&D project will implement nonpoint source control on dirt roads in a subwatershed (Spring Creek) that has been identified as critical habitat for endangered and threatened freshwater mussels. The Council recognizes the importance of improving nonpoint source pollutant control practices in the region and endorses this project as an important step in attaining this objective.

The project is consistent with the council's vision and goals, and it meets the eligibility criteria for the 319(h) grant program. The council can adopt appropriate language in support of the project into its regional Water Development and Conservation Plan and/or supplemental materials, as directed by your guidance and as needed to meet the requirements of the grant program.

The Lower Flint-Ochlockonee Water Council is pleased to have the opportunity to support this project.

Sincerely,

Richard Royal, Chairman
Lower Flint-Ochlockonee Water Council

cc:
Chris Faulkner, EPD
Sandy Tucker, USFWS

Addressing Unpaved Road Issues in the Spring Creek Watershed/Lower Flint-Ochlockonee Water Council Area

**Project Summary
(ABSTRACT)**

Project Title: Addressing Unpaved Road Issues in the Spring Creek Watershed/Lower Flint-Ochlockonee Water Council Area

Lead Organization:

NAME	Golden Triangle RC&D Council
Address	822-R Jesse Johnson St.
City, GA zip	Blakely, GA 39823
Phone:	(229) 723-3841
Fax:	(229) 723-3842

Primary Contact:

NAME	Frank Yancey
TITLE	RC&D Coordinator
ORGANIZATION NAME	Golden Triangle RC&D Council
Address	822-R Jesse Johnson St.
City, GA zip	Blakely, GA 39823
Phone:	(229) 723-3841
Fax:	(229) 723-3842
E-mail:	frank.yancey@ga.usda.gov

Funding:

Federal Funds Requested	\$ 100,000.00
Non-Federal Matching Funds	\$ 67,000.00
Total Project Funds	\$167,000.00

Project Start Date: November, 2011

Completion Date: November, 2013

Project Location:

The project location is an unpaved road in Nichol's Subdivision, located in Seminole County, GA within the Spring Creek Watershed (HUC 03130010)

Project Background:

The Golden Triangle RC&D in partnership with the Lower Flint-Ochlockonee Water Council, requests funding from the GA Environmental Protection Division's 319(h) non-point source pollution grant funds to address sedimentation loading into Spring Creek from an unpaved road in Nichol's Subdivision/Seminole County, GA.

Addressing Unpaved Road Issues in the Spring Creek Watershed/Lower Flint-Ochlockonee Water Council Area

The goal of this project is to eliminate sediment loading in this area by utilizing unpaved road best management practices found in the “GA Better Back Roads Field Manual”. The site work will not only solve the erosion and sediment loading problem, but will serve as a demonstration site for other counties interested in undertaking similar work.

Objectives:

The objective of this project is to promote the efforts of the Lower Flint-Ochlockonee Water Council while eliminating a source of sediment loading into Spring Creek. Through this project, the Golden Triangle RC&D will:

- Complete an unpaved road demonstration project in Nichol’s Subdivision - Seminole County, GA
- Work to reduce or eliminate sediment loading from the unpaved road site
- Determine amount of sediment loading reduced from the project
- Promote the use of unpaved road BMP’s through the demonstration project
- Hold an unpaved road BMP workshop/dedication event to highlight the project and educate the public

Activities:

- Determine best unpaved road practice(s) to be utilized following BMP’s recommended in the Georgia Better Back Roads Field Manual
- Work with partners in implementing BMP practice(s)
- Estimate sediment load reductions expected for the recommended management practice(s). Examples of methods that may be utilized include:
 - STEPL Model
 - USEPA Region V Model
- Document results
- Hold an unpaved road BMP workshop and dedication event to highlight project

Outputs:

- A completed unpaved road project in Nichol’s Subdivision-Seminole County, GA
- Photo documentation of BMP implementation
- Project information on the Golden Triangle RC&D’s and the Spring Creek Watershed Partnership’s website
- All applicable local, state and federal permits
- A minimum of one (1) unpaved road workshop/dedication event
- Press release(s) on project
- A report provided to the Lower-Flint Ochlockonee Water Council
- Semi-annual progress reports (one hard copy and one electronic copy) will be submitted each February 28 and August 31 for inclusion in the USEPA Grants Reporting and Tracking System.
- A Final Closeout Report (two hard copies and one electronic copy) will be submitted to GAEPD and USEPA for review and approval.

Addressing Unpaved Road Issues in the Spring Creek Watershed/Lower Flint-Ochlockonee Water Council Area

Expected Outcome:

- Successfully assist the Lower Flint-Ochlockonee Water Council in promoting their visions and goals
- Alleviate a source of sediment loading into Spring Creek through the use of unpaved road Best Management Practices
- Educate the public on unpaved road Best Management Practices through press releases, a workshop and presentations

Budget Summary:

NPS Pollution Activities	319(h) Grant	Non-Federal
<u>Funds</u>	<u>Funds</u>	<u>Matching</u>
BMP Demonstration Projects	\$100,000.00	\$67,000.00
Restoration/Protection/Prevention		
Education/Information		
Technical Assistance		
Regulatory/Enforcement Activities		
Planning Activities		
Water Quality Assessment/Monitoring		
	TOTALS: <u>\$100,000.00</u>	<u>\$ 67,000.00</u>
	(60%)	(40%)